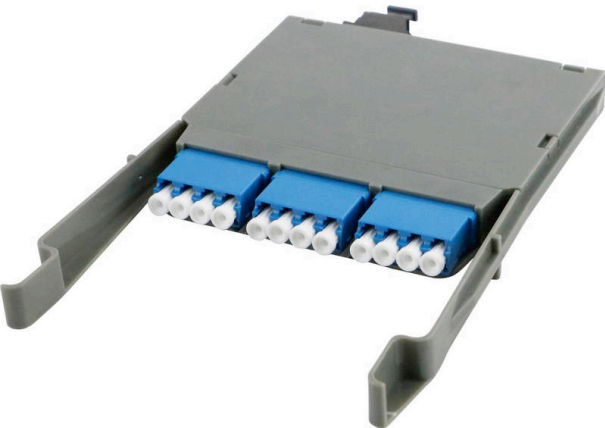


Enbeam HD 6P-12F LC-MTP OS2 Cassette – loaded (MOD 1)

Item Code: 208-111-MOD1



- ✕ High Density 12 LC to MTP cassette
- ✕ MTP ? US-Conec Elite connectors
- ✕ OS2 MTP
- ✕ Standard, MOD1 and MOD2 versions
- ✕ Part of the Excel HD panel system
- ✕ OS2, OM3 and OM4 options
- ✕ 25 Year System Warranty Available

Product Overview

The Excel LC-MTP High-Density cassette is designed for the Excel HD 1U panel, which has a capacity for 12 cassettes, offering up to 144 fibres per 1U. A range of cassettes are offered and can be mixed and matched as required to offer a highly dense and flexible system for both LC and MTP connectivity.

The LC ? MTP cassettes come complete with LC Adaptors at the front and MTP couplers at the rear, with an MTP-LC fan-out fibre assembly installed & factory tested. The cassettes are available in OS2, OM3 and OM4, configured standard or MOD 1 or MOD2. See the part number table below for all options.

The cassettes can be inserted into the panel from the front or the rear and feature 2 physical stops, one installed and one for patching.

The panel also offers full and innovative patchcord management to the front and cable management to the rear.

Product Specifications

Feature	Values
Suitable for number of fibre cores	12
With coupling/adaptor	yes
Type of connector external	LC
Type of connector interior	MT/MPO
Fibre type	Single mode

Enbeam HD 6P-12F LC-MTP OS2 Cassette – loaded
(MOD 1)

Item Code: 208-111-MOD1



APC-type	no
Colour	Grey

Additional specifications

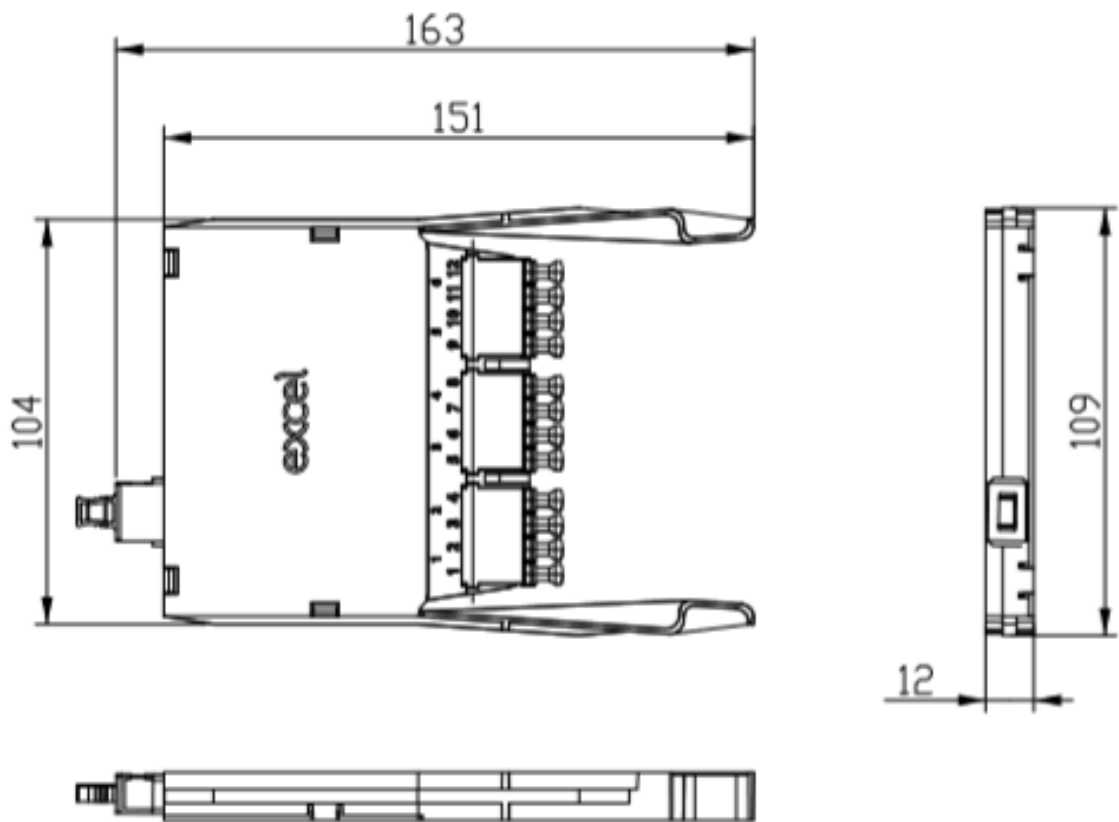
Features	Values
Operating Temperature	-40 to +80 °C
Capacity	12 LC-Fibres per cassette
Width	108mm
Height	12.5mm
Depth	168mm
Material Coating	ABS UL94-V0
Colour	Grey

Enbeam HD 6P-12F LC-MTP OS2 Cassette – loaded
(MOD 1)

Item Code: 208-111-MOD1



Product drawing



Standards

Applicable standard	Detail
RoHS-II/-III (2011/65/EU & 2015/863): 2023	Our products, demonstrate full adherence to the regulatory stipulations of the EU Directive 2011/65/EU (RoHS-II) and its corresponding delegated directive 2015/863 (RoHS-III).
IEC 61754-1:2013	Fibre optic interconnecting devices and passive components - Fibre optic connector interfaces - Part 1: General and guidance
WFD: 2023	Compliant to Waste Framework Directive
SCIP: 2023	Compliant - Does Not Contain Substances of Concern In articles as such or in complex objects (Products)
POPs (EU) No 2019/1021	EU Regulation for the restriction of Persistent Organic Pollutants.

Enbeam HD 6P-12F LC-MTP OS2 Cassette – loaded (MOD 1)

Item Code: 208-111-MOD1



Part Number Table

Part Number	Description
208-111	Excel Enbeam HD 6P-12F LC-MTP OS2 Cassette Loaded (Standard)
208-111-MOD1	Enbeam HD 6P-12F LC-MTP OS2 Cassette ? loaded (MOD 1)
208-111-MOD2	Enbeam HD 6P-12F LC-MTP OS2 Cassette ? loaded (MOD2)
208-112	Excel Enbeam HD 6P-12F LC-MTP OM3 Cassette Loaded (Standard)
208-112-MOD1	Enbeam HD 6P-12F LC-MTP OM3 Cassette ? loaded (MOD 1)
208-112-MOD2	Enbeam HD 6P-12F LC-MTP OM3 Cassette ? loaded (MOD2)
208-113	Excel Enbeam HD 6P-12F LC-MTP OM4 Cassette Loaded (Standard)
208-113-MOD1	Enbeam HD 6P-12F LC-MTP OM4 Cassette ? loaded (MOD 1)
208-113-MOD2	Enbeam HD 6P-12F LC-MTP OM4 Cassette ? loaded (MOD2)

Excel is a world class premium performing end to end infrastructure solution designed, Manufactured, supported and delivered without compromise.

Contact us at sales@excel-networking.com



E&OE. Excel is a registered trade name of Mayflex Holdings Ltd.