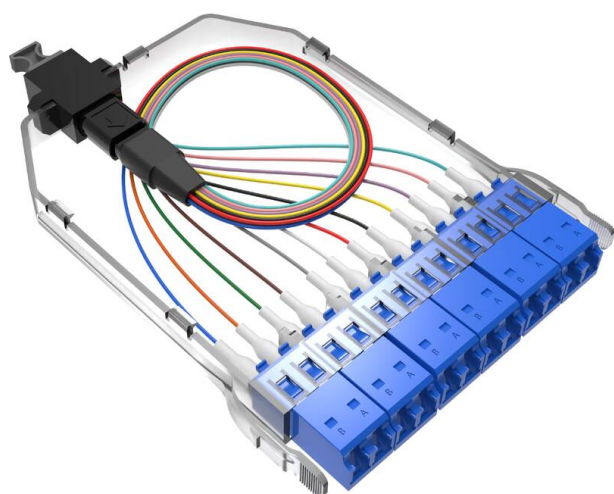


Excel Enbeam High Density Base 12-12 Fibre LC OS2 MTP Female Cassette

Item Code: 208-162-MOD2

excel
without compromise.



High density 12 LC to MTP cassette

MTP US-Conec Elite connectors

1x 12 Fibre MTP at rear

Standard pin configuration

Part of the Excel HD panel system

OS2 and OM4 options

Product Overview

The Excel LC High-Density cassette is designed for the Excel HD 208-157, 208-158 and 208-159 panels, which have the capacity to hold 144 , 288 and 576 fibres. A full range of cassettes are offered and can be mixed and matched as required to offer a highly dense and flexible system for both LC and MTP connectivity.

Product Specifications

Feature	Values
Suitable for number of fibre cores	12
With coupling/adaptor	yes
Type of connector external	LC
Type of connector interior	LC
Fibre type	Single mode
Colour	Opaque

Additional specifications

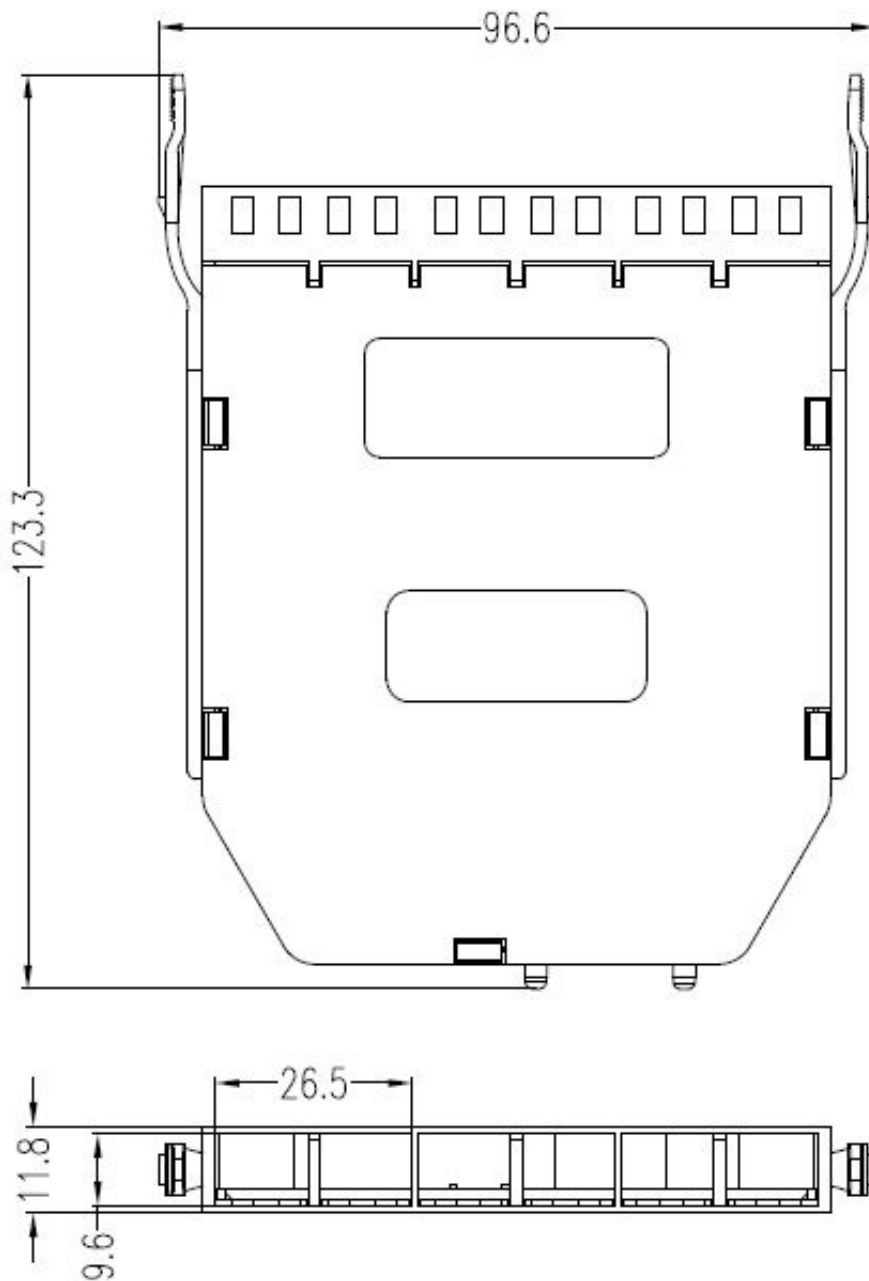
Features	Values
Number of adaptors	6
Fibre type	OS2
SM MTP Typical/Max Loss	0.1dB /0.35dB
SM LC Typical/Max Loss	0.15dB / 0.3dB
SM MTP Return loss	Less than -60dB (Angled)
SM LC Return loss	Less than -50dB (UPC)
Width	96.6mm
Depth	123.3mm
Height	11.8mm
Material	ABS
Storage temperature	-20 to +85°C
Operating temperature	-20 to +85°C

Excel Enbeam High Density Base 12-12 Fibre LC
OS2 MTP Female Cassette

Item Code: 208-162-MOD2



Product drawing



Excel Enbeam High Density Base 12-12 Fibre LC OS2 MTP Female Cassette

Item Code: 208-162-MOD2



Standards

Applicable standard	Detail
IEC 61754-1:2013	Fibre optic interconnecting devices and passive components - Fibre optic connector interfaces - Part 1: General and guidance
Directive 2011/65/EU (RoHS II)	Restriction of the Use of Certain Hazardous Substances in Electrical and Electronic Equipment — compliant. Applies within EU member states).
Directive (EU) 2015/863 (RoHS III)	Amending Directive 2011/65/EU to add four phthalates (DEHP, BBP, DBP, DIBP) to Annex II — compliant.
Directive 2008/98/EC (WFD)	Waste Framework Directive — compliant. Implemented in the UK through the Waste (England and Wales) Regulations 2011 (SI 2011 No. 988).
ECHA SCIP Database	Compliant; product does not contain SVHCs (Substances of Very High Concern) as defined under REACH Article 33(1). Submission obligations met under EU REACH and UK REACH.
Regulation (EU) 2019/1021 (POPs)	EU Regulation on Persistent Organic Pollutants — compliant. For Great Britain, compliance is aligned with the Persistent Organic Pollutants (Amendment) (EU Exit) Regulations 2020 (SI 2020 No. 1355).
UK SI 2012 No. 3032	The Restriction of the Use of Certain Hazardous Substances in Electrical and Electronic Equipment Regulations 2012 (UK RoHS) — compliant for Great Britain. Retained EU law, as amended by the Product Safety and Metrology (Amendment etc.) (EU Exit) Regulations 2019.

Part Number Table

Part Number	Description
208-162	Excel Enbeam High Density Base 12-12 Fibre LC OS2 MTP Female Cassette
208-162-MOD1	Excel Enbeam High Density Base 12-12 Fibre LC OS2 MTP Female Cassette
208-162-MOD2	Excel Enbeam High Density Base 12-12 Fibre LC OS2 MTP Female Cassette

Excel is a world class premium performing end to end infrastructure solution designed, Manufactured, supported and delivered without compromise.

Contact us at sales@excel-networking.com



E&OE. Excel is a registered trade name of Mayflex Holdings Ltd.