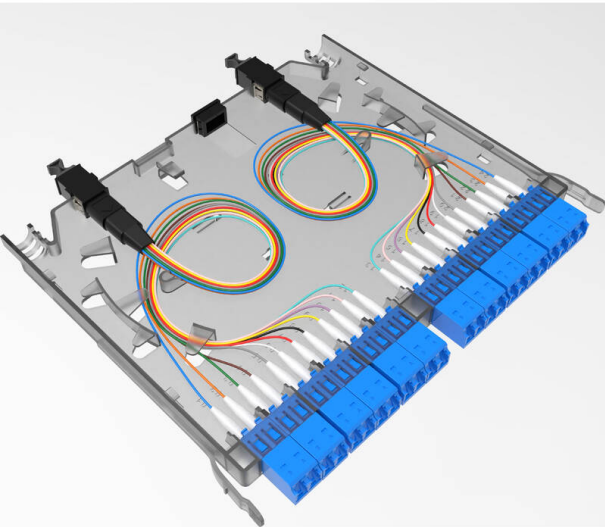


Excel Enbeam High Density Base 12-24 Fibre LC OS2 MTP Female Cassette

Item Code: 208-163-MOD2



- ✕ High density 24 LC to MTP cassette
- ✕ MTP US-Conec Elite connectors
- ✕ 2x 12 Fibre MTP at rear
- ✕ Standard pin configuration
- ✕ Part of the Excel HD panel system
- ✕ OS2 and OM4 options

Product Overview

The Excel LC High-Density double width cassette is designed for the Excel HD 208-157-24, 208-158-24 and 208-159-24 panels, which have the capacity to hold 144 , 288 and 576 fibres. A full range of cassettes are offered holding 24 fibres per cassette and can be mixed and matched as required to offer a highly dense and flexible system for both LC and MTP connectivity.

Product Specifications

Feature	Values
Suitable for number of fibre cores	24
With coupling/adapter	yes
Type of connector external	LC
Type of connector interior	LC
Fibre type	Single mode
Colour	Opaque

Excel Enbeam High Density Base 12-24 Fibre LC OS2 MTP Female Cassette

Item Code: 208-163-MOD2



Additional specifications

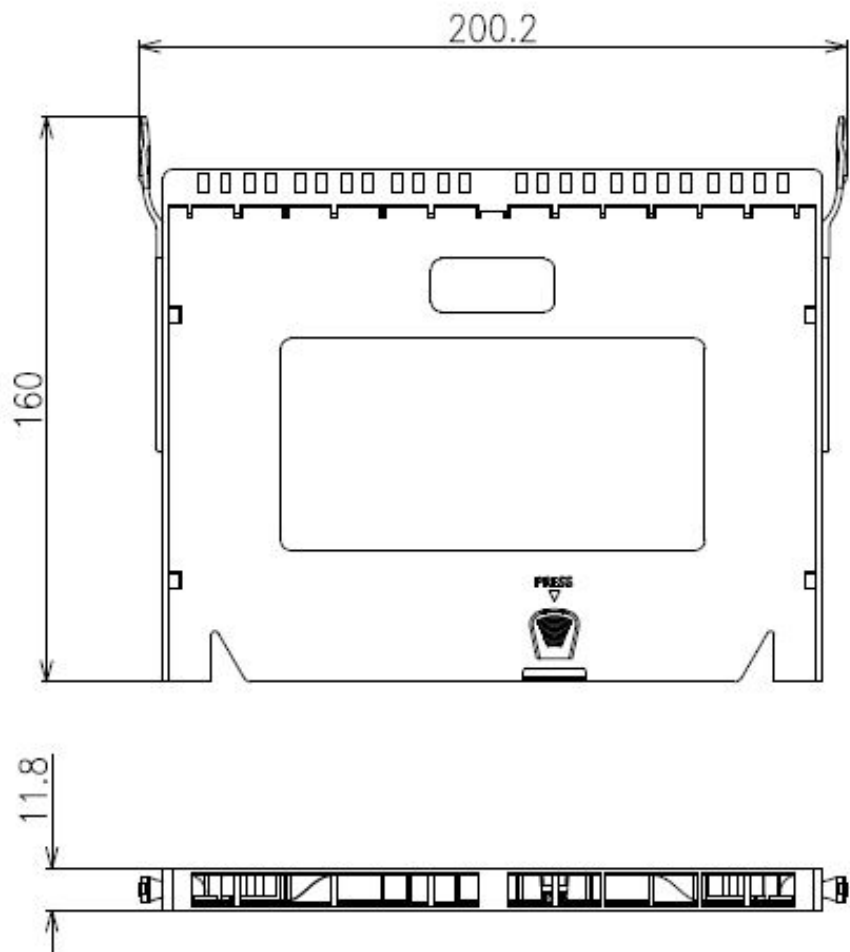
Features	Values
Number of adaptors	12
Fibre type	OS2
SM MTP Typical/Max Loss	0.1dB /0.35dB
SM LC Typical/Max Loss	0.15dB / 0.3dB
SM MTP Return loss	Less than -60dB (Angled)
SM LC Return loss	Less than -50dB (UPC)
Width	200.2mm
Depth	160mm
Height	11.8mm
Material	ABS
Storage temprature	-20 to +85°C
Operating temprature	-20 to +85°C

Excel Enbeam High Density Base 12-24 Fibre LC
OS2 MTP Female Cassette

Item Code: 208-163-MOD2



Product drawing



Standards

Applicable standard	Detail
IEC 61754-1:2013	Fibre optic interconnecting devices and passive components - Fibre optic connector interfaces - Part 1: General and guidance
RoHS-II/-III (2011/65/EU & 2015/863): 2023	Our products, demonstrate full adherence to the regulatory stipulations of the EU Directive 2011/65/EU (RoHS-II) and its corresponding delegated directive 2015/863 (RoHS-III).
WFD: 2023	Compliant to Waste Framework Directive
SCIP: 2023	Compliant - Does Not Contain Substances of Concern In articles as such or in complex objects (Products)

Excel Enbeam High Density Base 12-24 Fibre LC OS2 MTP Female Cassette

Item Code: 208-163-MOD2



POPs (EU) No 2019/1021

EU Regulation for the restriction of Persistent Organic Pollutants.

Part Number Table

Part Number	Description
208-163	Excel Enbeam High Density Base 12-24 Fibre LC OS2 MTP Female Cassette
208-163-MOD1	Excel Enbeam High Density Base 12-24 Fibre LC OS2 MTP Female Cassette
208-163-MOD2	Excel Enbeam High Density Base 12-24 Fibre LC OS2 MTP Female Cassette

Excel is a world class premium performing end to end infrastructure solution designed, Manufactured, supported and delivered without compromise.

Contact us at sales@excel-networking.com



E&OE. Excel is a registered trade name of Mayflex Holdings Ltd.