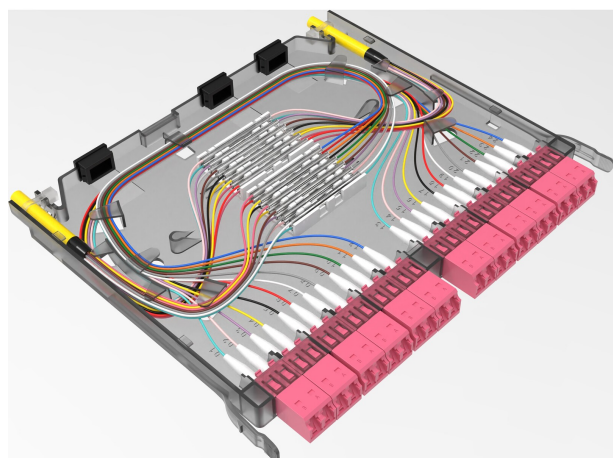


Excel Enbeam HD 12P-24F-LC-OM4 Cassette Loaded with Pigtails

Item Code: 208-165

excel
without compromise.



- ✕ High density 24 LC cassette
- ✕ Complete with splice protectors
- ✕ Can be splices or direct terminated
- ✕ Part of the Excel HD panel system
- ✕ OS2 and OM4 options

Product Overview

The Excel LC High-Density double width cassette is designed for the Excel HD 208-157-24, 208-158-24 and 208-159-24 panels, which have the capacity to hold 144 , 288 and 576 fibres. A full range of cassettes are offered holding 24 fibres per cassette and can be mixed and matched as required to offer a highly dense and flexible system for both LC connectivity.

Product Specifications

Feature	Values
Suitable for number of fibre cores	24
With coupling/adaptor	yes
Type of connector external	LC
Type of connector interior	LC
Fibre type	Multi mode
Colour	Black

Additional specifications

Features	Values
Number of adaptors	12
Fibre type	OM4
MM LC Typical/Max Loss	0.15dB / 0.3dB
MM LC Return loss	Less than -30dB (PC)
Width	200.2mm

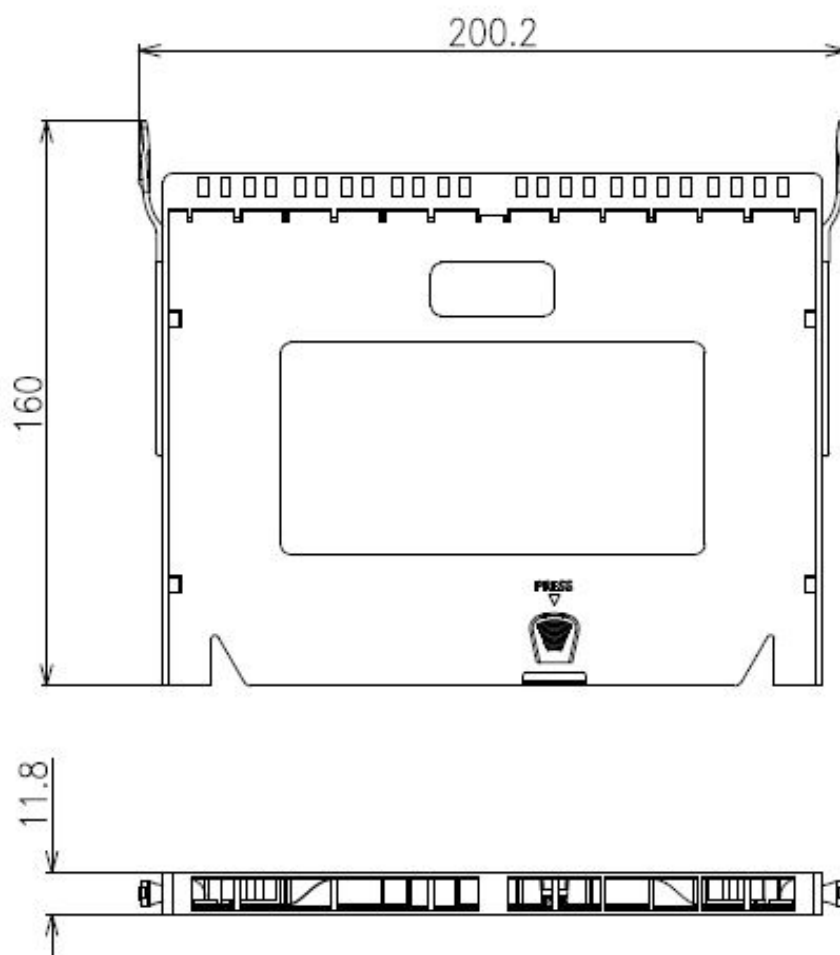
Excel Enbeam HD 12P-24F-LC-OM4 Cassette Loaded with Pigtails

Item Code: 208-165



Depth	160mm
Height	11.8mm
Material	ABS
Storage temperature	-20 to +85°C
Operating temperature	-20 to +85°C

Product drawing



Excel Enbeam HD 12P-24F-LC-OM4 Cassette Loaded with Pigtails

Item Code: 208-165



Standards

Applicable standard	Detail
IEC 61754-1:2013	Fibre optic interconnecting devices and passive components - Fibre optic connector interfaces - Part 1: General and guidance
RoHS-II/-III (2011/65/EU & 2015/863): 2023	Our products, demonstrate full adherence to the regulatory stipulations of the EU Directive 2011/65/EU (RoHS-II) and its corresponding delegated directive 2015/863 (RoHS-III).
WFD: 2023	Compliant to Waste Framework Directive
SCIP: 2023	Compliant - Does Not Contain Substances of Concern In articles as such or in complex objects (Products)
POPs (EU) No 2019/1021	EU Regulation for the restriction of Persistent Organic Pollutants.

Part Number Table

Part Number	Description
208-165	Excel Enbeam HD 12P-24F-LC-OM4 Cassette Loaded with Pigtails

Excel is a world class premium performing end to end infrastructure solution designed, Manufactured, supported and delivered without compromise.

Contact us at sales@excel-networking.com



E&OE. Excel is a registered trade name of Mayflex Holdings Ltd.