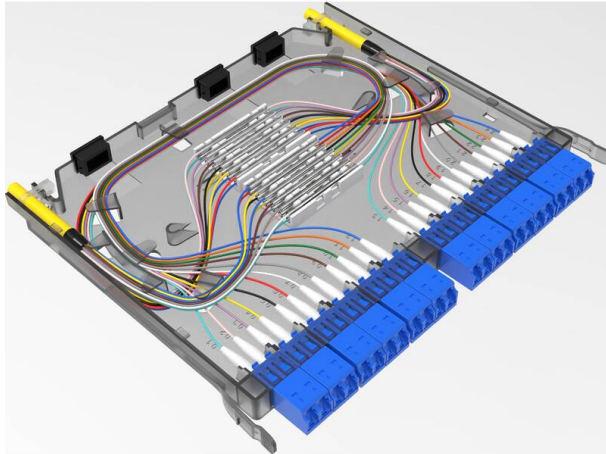


# Excel Enbeam HD 12P-24F-LC-OS2 Cassette Loaded with Pigtails

Item Code: 208-167



- ✕ High density 24 LC cassette
- ✕ Complete with splice protectors
- ✕ Can be splices or direct terminated
- ✕ Part of the Excel HD panel system
- ✕ OS2 and OM4 options

## Product Overview

The Excel LC High-Density double width cassette is designed for the Excel HD 208-157-24, 208-158-24 and 208-159-24 panels, which have the capacity to hold 144 , 288 and 576 fibres. A full range of cassettes are offered holding 24 fibres per cassette and can be mixed and matched as required to offer a highly dense and flexible system for both LC connectivity.

## Product Specifications

Feature	Values
Suitable for number of fibre cores	24
With coupling/adaptor	yes
Type of connector external	LC
Type of connector interior	LC
Fibre type	Single mode
Colour	Black

## Additional specifications

Features	Values
Number of adaptors	12
Fibre type	OS2
SM LC Typical/Max Loss	0.15dB / 0.3dB
SM LC Return loss	Less than -50dB (UPC)
Width	200.2mm

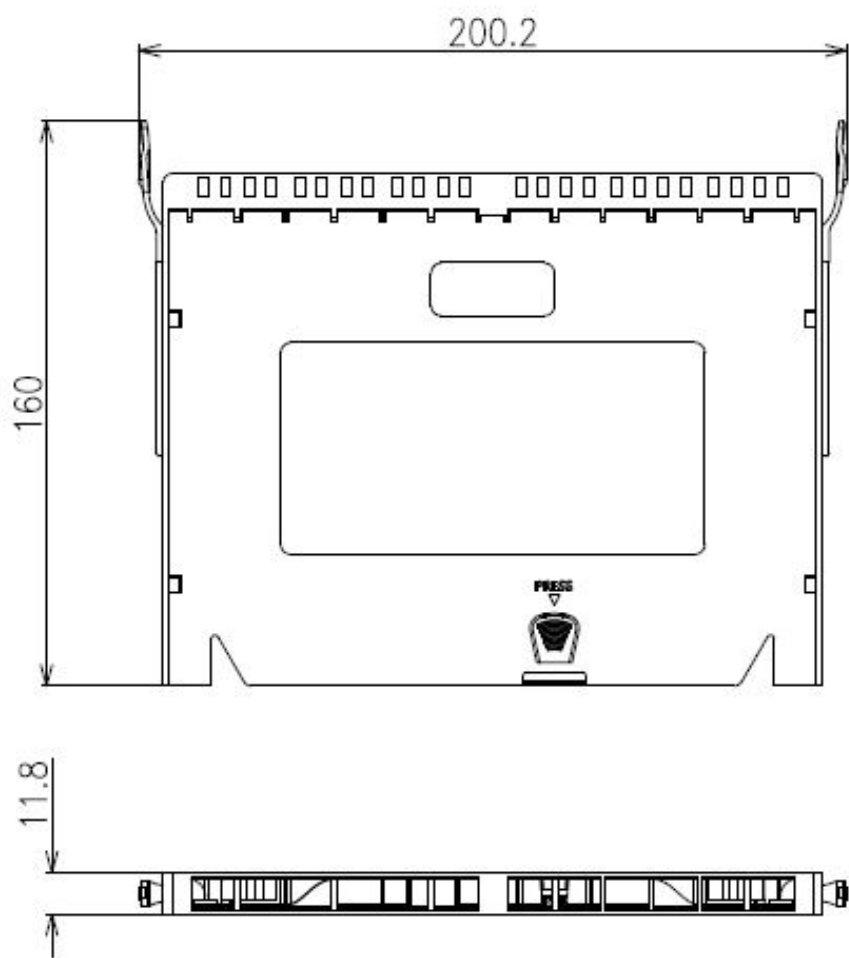
Excel Enbeam HD 12P-24F-LC-OS2 Cassette Loaded  
with Pigtails

Item Code: 208-167



Depth	160mm
Height	11.8mm
Material	ABS
Storage temperature	-20 to +85°C
Operating temperature	-20 to +85°C

Product drawing



# Excel Enbeam HD 12P-24F-LC-OS2 Cassette Loaded with Pigtails

Item Code: 208-167



## Standards

Applicable standard	Detail
IEC 61754-1:2013	Fibre optic interconnecting devices and passive components - Fibre optic connector interfaces - Part 1: General and guidance
RoHS-II/-III (2011/65/EU & 2015/863): 2023	Our products, demonstrate full adherence to the regulatory stipulations of the EU Directive 2011/65/EU (RoHS-II) and its corresponding delegated directive 2015/863 (RoHS-III).
WFD: 2023	Compliant to Waste Framework Directive
SCIP: 2023	Compliant - Does Not Contain Substances of Concern In articles as such or in complex objects (Products)
POPs (EU) No 2019/1021	EU Regulation for the restriction of Persistent Organic Pollutants.

## Part Number Table

Part Number	Description
208-167	Excel Enbeam HD 12P-24F-LC-OS2 Cassette Loaded with Pigtails

Excel is a world class premium performing end to end infrastructure solution designed, Manufactured, supported and delivered without compromise.

Contact us at [sales@excel-networking.com](mailto:sales@excel-networking.com)



E&OE. Excel is a registered trade name of Mayflex Holdings Ltd.