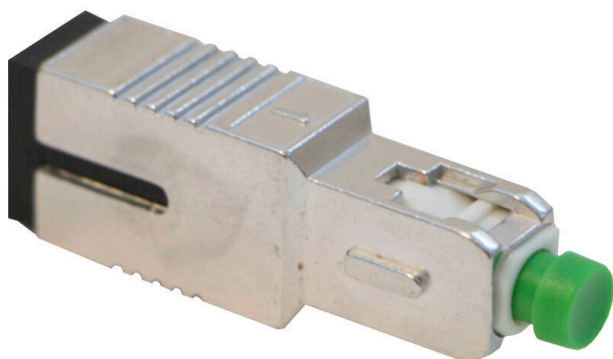


Excel Enbeam SCA Singlemode 1dB Attenuator

Item Code: 208-556

excel
without compromise.



Compact design

Easy to connect/ disconnect

Available in SC/APC, SC/UPC, LC/UPC and LC/APC

Available in fixed attenuation values of 1/2/5/10/15/20 dB

25 Year system warranty

Product Overview

The Excel Enbeam Fixed value attenuators are used to match signal power to receiver dynamic range in optical networks. The Excel range of singlemode high performance devices are designed to give accurate attenuation over a wide range of wavelengths.

The plug type configuration allows easy to use functionality 'straight out of the box'. This allows connection directly to the fibre patch cord, for insertion onto the adaptor.

Product Specifications

Feature	Values
Signal attenuation	1 dB
Ambient temperature	-40...75 °C
Fibre type	Single mode 9/125
Connector connection 1	SC/APC

Additional specifications

Features	Values
Ferrule Type	Zirconia Ceramic
Operating Wavelength (nm)	1310nm, 1550nm
Attenuation accuracy 1-5 dB	±0.5dB
Attenuation accuracy 10 dB	±0.75dB

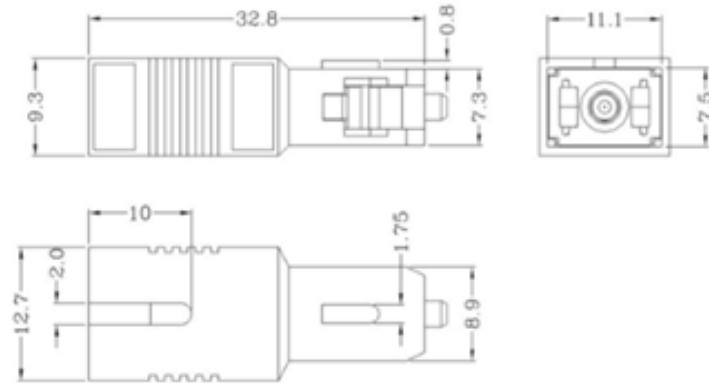
Excel Enbeam SCA Singlemode 1dB Attenuator



Item Code: 208-556

Attenuation accuracy 15-20 dB	±10% overall dB
Return loss (UPC)	≥55dB
Return loss (APC)	≥65dB
Mating Durability	≥1000 cycle
Housing	Zinc Alloy

Product drawing



Standards

Applicable standard	Detail
Directive 2011/65/EU (RoHS II)	Restriction of the Use of Certain Hazardous Substances in Electrical and Electronic Equipment — compliant. Applies within EU member states).
Directive (EU) 2015/863 (RoHS III)	Amending Directive 2011/65/EU to add four phthalates (DEHP, BBP, DBP, DIBP) to Annex II — compliant.
IEC 61754-1:2013	Fibre optic interconnecting devices and passive components - Fibre optic connector interfaces - Part 1: General and guidance
Directive 2008/98/EC (WFD)	Waste Framework Directive — compliant. Implemented in the UK through the Waste (England and Wales) Regulations 2011 (SI 2011 No. 988).
ECHA SCIP Database	Compliant; product does not contain SVHCs (Substances of Very High Concern) as defined under REACH Article 33(1). Submission obligations met under EU REACH and UK REACH.

Item Code: 208-556

Regulation (EU) 2019/1021 (POPs)

EU Regulation on Persistent Organic Pollutants — compliant. For Great Britain, compliance is aligned with the Persistent Organic Pollutants (Amendment) (EU Exit) Regulations 2020 (SI 2020 No. 1355).

UK SI 2012 No. 3032

The Restriction of the Use of Certain Hazardous Substances in Electrical and Electronic Equipment Regulations 2012 (UK RoHS) — compliant for Great Britain. Retained EU law, as amended by the Product Safety and Metrology (Amendment etc.) (EU Exit) Regulations 2019.

Part Number Table

Part Number	Description
208-550	Enbeam SC singlemode 1db attenuator
208-551	Excel Enbeam SC Singlemode 2dB Attenuator
208-552	Excel Enbeam SC Singlemode 5dB Attenuator
208-553	Excel Enbeam SC Singlemode 10dB Attenuator
208-554	Excel Enbeam SC Singlemode 15dB Attenuator
208-555	Excel Enbeam SC Singlemode 20dB Attenuator
208-556	Excel Enbeam SCA Singlemode 1dB Attenuator
208-557	Excel Enbeam SCA Singlemode 2dB Attenuator
208-558	Excel Enbeam SCA Singlemode 5dB Attenuator
208-559	Excel Enbeam SCA Singlemode 10dB Attenuator
208-560	Excel Enbeam SCA Singlemode 15dB Attenuator
208-561	Excel Enbeam SCA Singlemode 20dB Attenuator
208-576	Enbeam SC/APC Singlemode 3 dB Attenuator
208-577	Enbeam SC/APC Singlemode 7 dB Attenuator

Excel is a world class premium performing end to end infrastructure solution designed, Manufactured, supported and delivered without compromise.

Contact us at sales@excel-networking.com