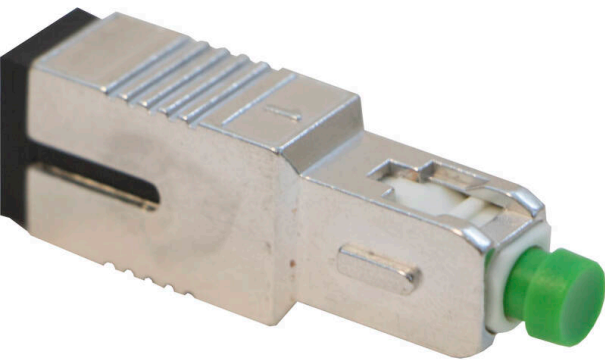


Excel Enbeam SCA Singlemode 15dB Attenuator

Item Code: 208-560



- ✕ Compact design
- ✕ Easy to connect/ disconnect
- ✕ Available in SC/APC, SC/UPC, LC/UPC and LC/APC
- ✕ Available in fixed attenuation values of 1/2/5/10/15/20 dB
- ✕ 25 Year system warranty
- ✕ CIBSE TM65 Embodied Carbon: 0.022 kg CO2e

Product Overview

The Excel Enbeam Fixed value attenuators are used to match signal power to receiver dynamic range in optical networks. The Excel range of singlemode high performance devices are designed to give accurate attenuation over a wide range of wavelengths.

The plug type configuration allows easy to use functionality 'straight out of the box'. This allows connection directly to the fibre patch cord, for insertion onto the adaptor.

Product Specifications

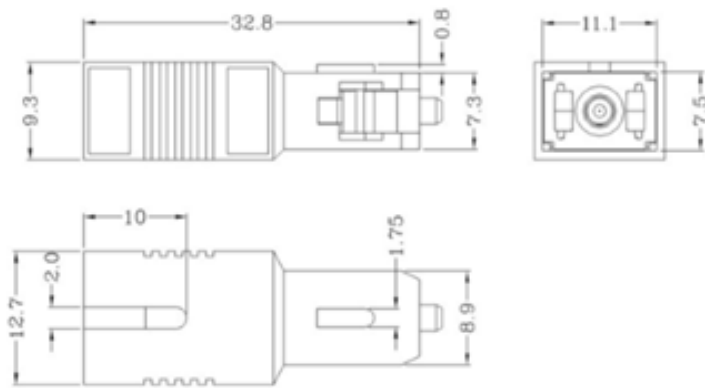
Feature	Values
Signal attenuation	15 dB
Ambient temperature	-40...75 °C
Fibre type	Single mode 9/125
Connector connection 1	SC/APC

Item Code: 208-560

Additional specifications

Features	Values
Ferrule Type	Zirconia Ceramic
Operating Wavelength (nm)	1310nm, 1550nm
Attenuation accuracy 1-5 dB	±0.5dB
Attenuation accuracy 10 dB	±0.75dB
Attenuation accuracy 15-20 dB	±10% overall dB
Return loss (UPC)	≥55dB
Return loss (APC)	≥65dB
Mating Durability	≥1000 cycle
Housing	Zinc Alloy

Product drawing



Standards

Applicable standard	Detail
RoHS-II/-III (2011/65/EU & 2015/863): 2023	Our products, demonstrate full adherence to the regulatory stipulations of the EU Directive 2011/65/EU (RoHS-II) and its corresponding delegated directive 2015/863 (RoHS-III).
IEC 61754-1:2013	Fibre optic interconnecting devices and passive components - Fibre optic connector interfaces - Part 1: General and guidance

Excel Enbeam SCA Singlemode 15dB Attenuator

Item Code: 208-560



WFD: 2023

Compliant to Waste Framework Directive

SCIP: 2023

Compliant - Does Not Contain Substances of Concern In articles as such or in complex objects (Products)

POPs (EU) No 2019/1021

EU Regulation for the restriction of Persistent Organic Pollutants.

Part Number Table

Part Number	Description
208-550	Enbeam SC singlemode 1db attenuator
208-551	Excel Enbeam SC Singlemode 2dB Attenuator
208-552	Excel Enbeam SC Singlemode 5dB Attenuator
208-553	Excel Enbeam SC Singlemode 10dB Attenuator
208-554	Excel Enbeam SC Singlemode 15dB Attenuator
208-555	Excel Enbeam SC Singlemode 20dB Attenuator
208-556	Excel Enbeam SCA Singlemode 1dB Attenuator
208-557	Excel Enbeam SCA Singlemode 2dB Attenuator
208-558	Excel Enbeam SCA Singlemode 5dB Attenuator
208-559	Excel Enbeam SCA Singlemode 10dB Attenuator
208-560	Excel Enbeam SCA Singlemode 15dB Attenuator
208-561	Excel Enbeam SCA Singlemode 20dB Attenuator

Excel is a world class premium performing end to end infrastructure solution designed, Manufactured, supported and delivered without compromise.

Contact us at sales@excel-networking.com



E&OE. Excel is a registered trade name of Mayflex Holdings Ltd.