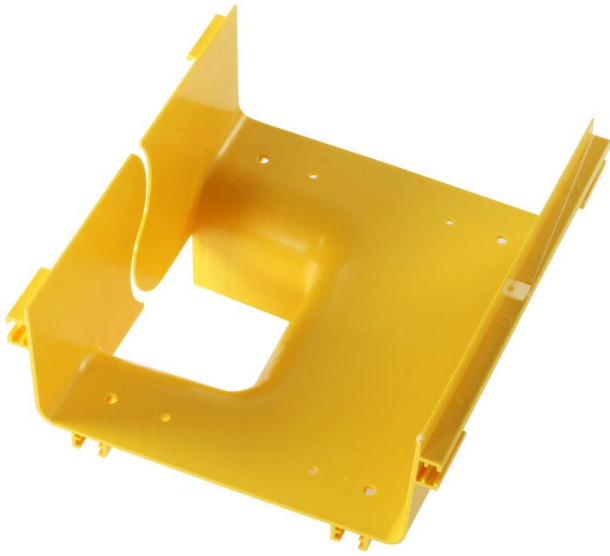


# Excel Enbeam 240 mm to 120 mm Vertical TEE LSOH

Item Code: 460-017

**excel**  
without compromise.



Flame-retardant ABS material

LSOH

Extremely adaptable, will evolve to suit this demanding market

Easy to assemble

Fast installation, minimum labour

Choice of width: 120/240 mm

## Product Overview

Enbeam Yellow Duct System: Piecing together in individual segments, Excel's duct trunking system is flexible and suitable for an endless array of installations. A range of unique trunking segments in a variety of bend radii and lengths connect together in an infinite number of ways, allowing users to create a fibre storage solution that is fit for purpose.

As each segment of trunking is a standalone piece of plastic, users can simply remove the section of the cover that they need and make changes to the installation without having to disrupt the whole system, which increases the durability and longevity of the system overall. The system is fully enclosed, protecting the fibre from dirt and dust.

Knowing that cleanliness is one of the most important factors when installing fibre optic cable, the fact that this trunking system helps to limit the contamination to the fibre makes it a strong contender for users choosing a trunking option.

## Product Specifications

Feature	Values
Cable tray height	100 mm
Cable tray width	240/120
Construction type	T-piece horizontal
Model	Without connector
Material	Plastic
Material quality	Other

Colour

Yellow

## Standards

Applicable standard	Detail
Directive 2011/65/EU (RoHS II)	Restriction of the Use of Certain Hazardous Substances in Electrical and Electronic Equipment — compliant. Applies within EU member states).
Directive (EU) 2015/863 (RoHS III)	Amending Directive 2011/65/EU to add four phthalates (DEHP, BBP, DBP, DIBP) to Annex II — compliant.
Directive 2008/98/EC (WFD)	Waste Framework Directive — compliant. Implemented in the UK through the Waste (England and Wales) Regulations 2011 (SI 2011 No. 988).
ECHA SCIP Database	Compliant; product does not contain SVHCs (Substances of Very High Concern) as defined under REACH Article 33(1). Submission obligations met under EU REACH and UK REACH.
Regulation (EU) 2019/1021 (POPs)	EU Regulation on Persistent Organic Pollutants — compliant. For Great Britain, compliance is aligned with the Persistent Organic Pollutants (Amendment) (EU Exit) Regulations 2020 (SI 2020 No. 1355).
UK SI 2012 No. 3032	The Restriction of the Use of Certain Hazardous Substances in Electrical and Electronic Equipment Regulations 2012 (UK RoHS) — compliant for Great Britain. Retained EU law, as amended by the Product Safety and Metrology (Amendment etc.) (EU Exit) Regulations 2019.

## Part Number Table

Part Number	Description
460-001	Excel Enbeam 120 mm Fibre Cable Tray LSOH
460-002	Excel Enbeam 240 mm Fibre Cable Tray LSOH
460-003	Excel Enbeam 120 mm Connector LSOH
460-004	Excel Enbeam 240 mm Connector LSOH
460-005	Excel Enbeam 240 mm to 120 mm Connector LSOH
460-006	Excel Enbeam 120 mm Horizontal 90 Degree Bend LSOH
460-007	Excel Enbeam 240 mm Horizontal 90 Degree Bend LSOH
460-008	Excel Enbeam 120 mm Internal Riser 45 Degree LSOH
460-009	Excel Enbeam 240 mm Internal Riser 45 Degree LSOH

# Excel Enbeam 240 mm to 120 mm Vertical TEE LSOH

Item Code: 460-017



460-010	Excel Enbeam 120 mm External Riser 45 Degree LSOH
460-011	Excel Enbeam 240 mm External Riser 45 Degree LSOH
460-012	Excel Enbeam 120 mm Horizontal 45 Degree Bend LSOH
460-013	Excel Enbeam 240 mm Horizontal 45 Degree Bend LSOH
460-014	Excel Enbeam 120 mm Horizontal TEE LSOH
460-015	Excel Enbeam 240 mm Horizontal TEE LSOH
460-016	Excel Enbeam 240 mm to 120 mm Reducer TEE LSOH
460-017	Excel Enbeam 240 mm to 120 mm Vertical TEE LSOH
460-018	Excel Enbeam 120 mm Cross Junction LSOH
460-019	Excel Enbeam 240 mm Cross Junction LSOH
460-020	Excel Enbeam 120 mm Bend Radius Trumpet End LSOH
460-021	Excel Enbeam 240 mm Bend Radius Trumpet End LSOH
460-022	Excel Enbeam 120 mm End Cap LSOH
460-023	Excel Enbeam 240 mm End Cap LSOH
460-024	Excel Enbeam Universal Exit Kit with Flexible Tube LSOH
460-025	Excel Enbeam Universal Exit Kit for Trunking Drop 120 mm LSOH
460-026	Excel Enbeam 120 mm Hanging Bar
460-027	Excel Enbeam 240 mm Hanging Bar
460-028	Excel Enbeam 120 mm L Bracket
460-029	Excel Enbeam 240 mm L Bracket
460-030	Excel Enbeam 120 mm Top Stand
460-031	Excel Enbeam 240 mm Top Stand
460-032	Excel Enbeam 120 mm Trunking Cover LSOH
460-033	Excel Enbeam 240 mm Trunking Cover LSOH
460-034	Excel Enbeam 120 mm Elbow Cover 90 Degree LSOH
460-035	Excel Enbeam 240 mm Elbow Cover 90 Degree LSOH
460-036	Excel Enbeam 120 mm Internal Cover 45 Degree Bend LSOH
460-037	Excel Enbeam 240 mm Internal Cover 45 Degree Bend LSOH
460-038	Excel Enbeam 120 mm External Cover 45 Degree Bend LSOH
460-039	Excel Enbeam 240 mm External Cover 45 Degree Bend LSOH
460-040	Excel Enbeam 120 mm Horizontal Cover 45 Degree Bend LSOH
460-041	Excel Enbeam 240 mm Horizontal Cover 45 Degree Bend LSOH

# Excel Enbeam 240 mm to 120 mm Vertical TEE LSOH

Item Code: 460-017



460-042	Excel Enbeam 120 mm Horizontal TEE Cover LSOH
460-043	Excel Enbeam 240 mm Horizontal TEE Cover LSOH
460-044	Excel Enbeam 240 mm to 120 mm Reducer TEE Cover LSOH
460-045	Excel Enbeam 240 mm to 120 mm Vertical TEE Cover LSOH
460-046	Excel Enbeam 120 mm Cross Junction Cover LSOH
460-047	Excel Enbeam 240 mm Cross Junction Cover LSOH
460-048	Excel Enbeam 120 mm Fibre Cable Tray UL94 V-0 PVC
460-049	Excel Enbeam 240 mm Fibre Cable Tray UL94 V-0 PVC
460-050	Excel Enbeam 120 mm Trunking Cover UL94 V-0 PVC
460-051	Excel Enbeam 240 mm Trunking Cover UL94 V-0 PVC
460-052	Excel Enbeam 240 mm to 120 mm Connector Cover LSOH
460-053	Excel Enbeam 120 mm Hanging Set
460-054	Excel Enbeam 240 mm Hanging Set
460-055	Excel Enbeam 120 mm L Bracket Support
460-056	Excel Enbeam 240 mm L Bracket Support

Excel is a world class premium performing end to end infrastructure solution designed, Manufactured, supported and delivered without compromise.

Contact us at [sales@excel-networking.com](mailto:sales@excel-networking.com)



E&OE. Excel is a registered trade name of Mayflex Holdings Ltd.