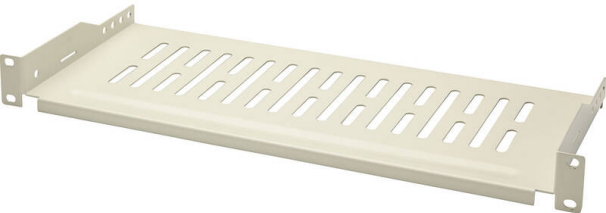


Excel Cantilever Shelf 400 mm Grey White

Item Code: 542-021-GE



✕ Choice of depths

✕ Available in Grey White and Black

✕ Perforated design

✕ 25 Years system warranty

Product Overview

Environ Cantilever Shelves can be used to support both active and non-active data equipment within the rack that is not 19" rack mountable, these shelves are fitted to the front 19" profiles using M6 hardware and are vented which allows for air circulation around the equipment.

This shelf is commonly deployed in wall racks but can also be used in floor standing racks, universal fitting allows them to be used in a wide range of racks. The shelf allows for fitting of equipment in situations where one set of profiles have already been used for existing equipment.

Product Specifications

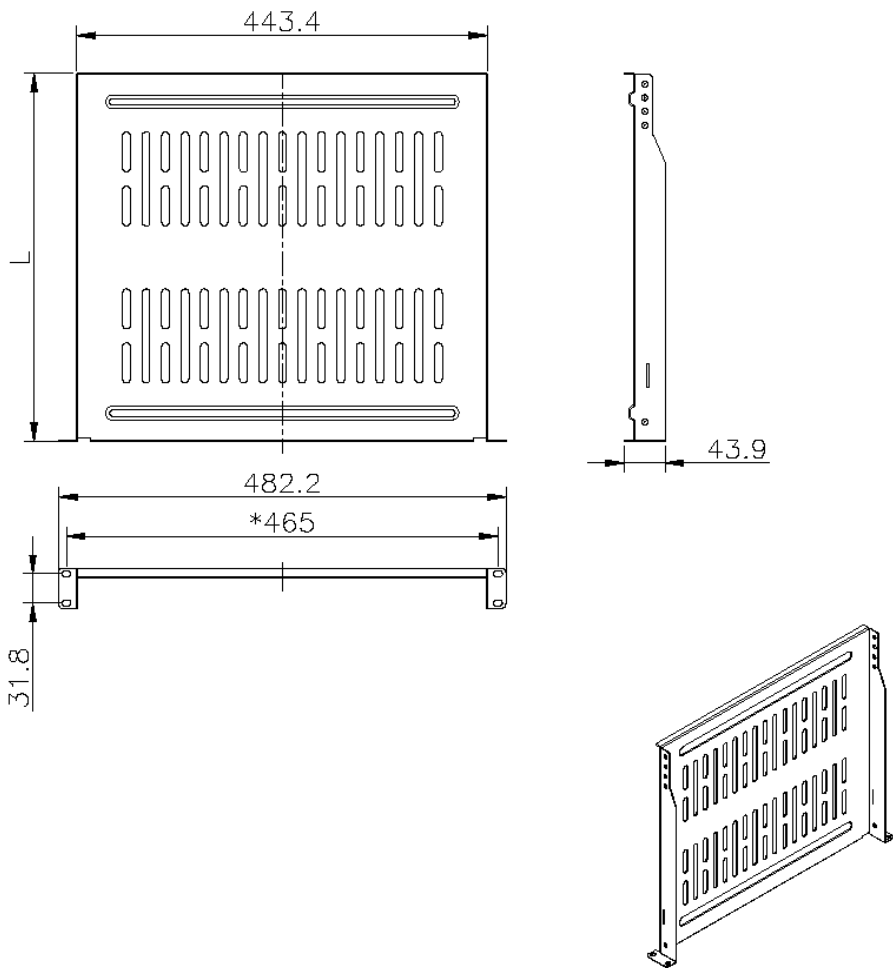
Feature	Values
Model	Cantilever shelf
Width	475 (19")
Height	45 (1U)
Depth	400 mm
Max. load capacity	10 kg
Material	Metal
Colour	Grey

Excel Cantilever Shelf 400 mm Grey White



Item Code: 542-021-GE

Product drawing



Part Number Table

Part Number	Description
542-020-BK	Excel Cantilever Shelf 190 mm Black
542-020-GE	Excel Cantilever Shelf 190 mm Grey White
542-021-BK	Excel Cantilever Shelf 400 mm Black
542-021-GE	Excel Cantilever Shelf 400 mm Grey White

Excel is a world class premium performing end to end infrastructure solution designed, Manufactured, supported and delivered without compromise.

Contact us at sales@excel-networking.com



E&OE. Excel is a registered trade name of Mayflex Holdings Ltd.