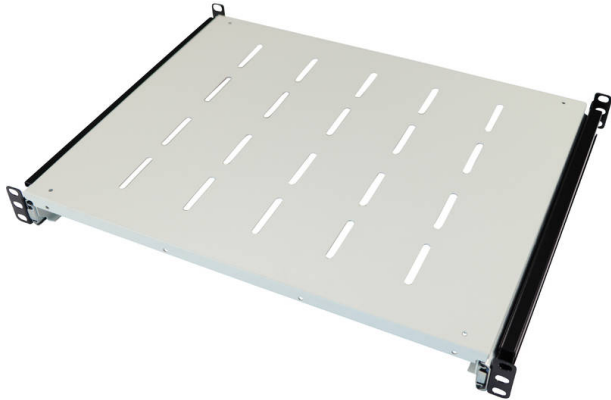


# Environ Sliding Shelves 350mm Depth (Mounting Depth: 375mm-660mm) Grey White

Item Code: 542-027-GE

**excel**  
without compromise.



✕ Choice of depths

✕ Available in Grey White and Black

✕ Perforated design

✕ 25 Year system warranty

## Product Overview

Environ rack shelves can be used to support both active and non-active data equipment within the rack that is not 19" rack mountable. These shelves can be used to support equipment from any industry to create the desired solution.

Installation is achieved by attaching to both the front and rear 19" profiles using M6 fixing hardware and are vented allowing for air circulation around the communication equipment.

## Product Specifications

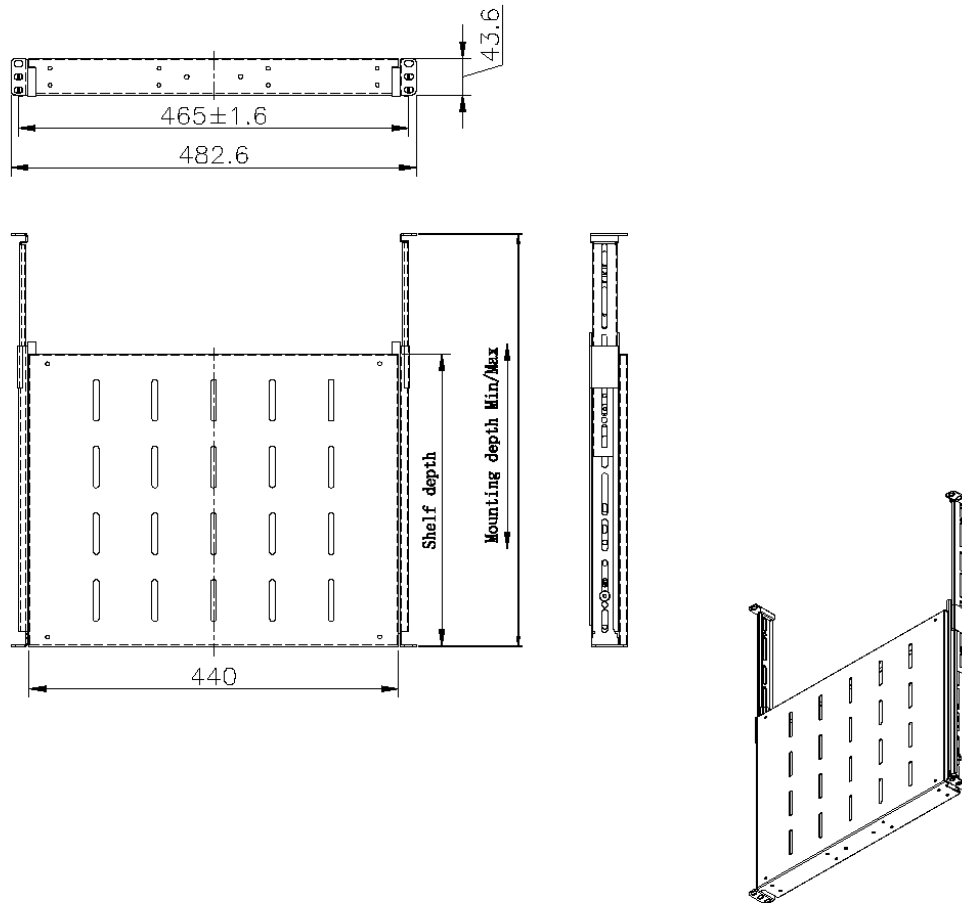
Feature	Values
Model	Sliding shelf
Width	19"
Height	1U
Depth	350 mm
Max. load capacity	30 kg
Material	Metal
Colour	Grey
RAL-number	9002

# Environ Sliding Shelves 350mm Depth (Mounting Depth: 375mm-660mm) Grey White

Item Code: 542-027-GE



## Product drawing



## Part Number Table

Part Number	Description
542-027-BK	Environ Sliding Shelves 350 mm Depth (Mounting Depth: 375 mm-660 mm) Black
542-027-GE	Environ Sliding Shelves 350mm Depth (Mounting Depth: 375mm-660mm) Grey White
542-028-BK	Environ Sliding Shelves 563mm Depth (Mounting Depth: 605mm-855mm) Black
542-028-GE	Environ Sliding Shelves 563mm Depth (Mounting Depth: 605mm-855mm) Grey White
542-029-BK	Environ Sliding Shelves 550mm Depth (Mounting Depth: 605mm-875mm) Black
542-029-GE	Environ Sliding Shelves 550mm Depth (Mounting Depth: 605mm-875mm)

Environ Sliding Shelves 350mm Depth (Mounting  
Depth: 375mm-660mm) Grey White

Item Code: 542-027-GE



Grey White

Excel is a world class premium performing end to end infrastructure solution designed,  
Manufactured, supported and delivered without compromise.

Contact us at [sales@excel-networking.com](mailto:sales@excel-networking.com)



E&OE. Excel is a registered trade name of Mayflex Holdings Ltd.