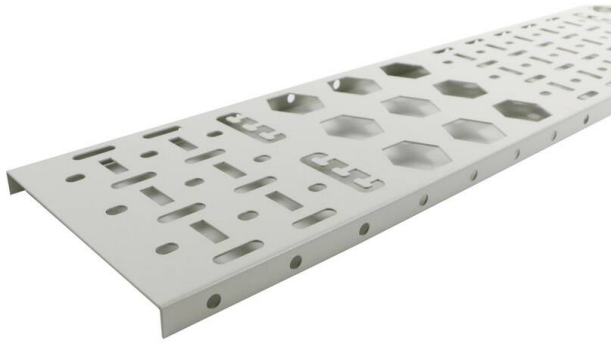


Excel Cable Tray (2pc) 150 mm 47U Grey White

Item Code: 542-150-47-GE



Choice of size

Choice of colours

Compatible with Environ CR/ER/SR floor standing racks

Supplied in packs of 2

Multiple cable tie fixing methods

Side wall return - 10 mm

CIBSE TM65 Embodied Carbon: 38.649 kg CO2e

Product Overview

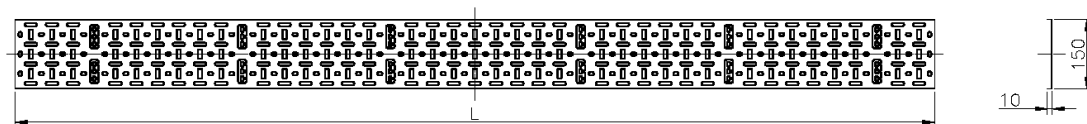
Environ Cable Tray is commonly used to support and manage cabling within a data rack, the ventilated tray has a stamp profile of various size and shape openings which allows for air flow circulation around the cabling and easy fitting of different size cable straps and cable bundles.

Cables can be secured to the tray using either plastic or velcro cable straps, the profile design of the tray makes it easy to ensure that fixing can be achieved wherever needed.

Product Specifications

Feature	Values
Height	47u
Width	150 mm
Mounting perforation in bottom	yes
Material	Steel
Colour	Grey
RAL-number	9002

Product drawing



Part Number Table

Part Number	Description
542-150-20-GE	Excel Cable Tray (2pc) 150 mm 20U Grey White
542-150-24-BK	Excel Cable Tray (2pc) 150 mm 24U Black
542-150-24-GE	Excel Cable Tray (2pc) 150 mm 24U Grey White
542-150-29-BK	Excel Cable Tray (2pc) 150 mm 29U Black
542-150-29-GE	Excel Cable Tray (2pc) 150 mm 29U Grey White
542-150-32-BK	Excel Cable Tray (2pc) 150 mm 32U Black
542-150-32-GE	Excel Cable Tray (2pc) 150 mm 32U Grey White
542-150-38-BK	Excel Cable Tray (2pc) 150 mm 38U Black
542-150-42-BK	Excel Cable Tray (2pc) 150 mm 42U Black
542-150-42-GE	Excel Cable Tray (2pc) 150 mm 42U Grey White
542-150-47-BK	Excel Cable Tray (2pc) 150 mm 47U Black
542-150-47-GE	Excel Cable Tray (2pc) 150 mm 47U Grey White

Excel is a world class premium performing end to end infrastructure solution designed, Manufactured, supported and delivered without compromise.

Contact us at sales@excel-networking.com



E&OE. Excel is a registered trade name of Mayflex Holdings Ltd.