

# Environ Cable Tray (2pc) 300 mm 42U Grey White

Item Code: 542-300-42-GE



✕ Choice of size

✕ Choice of colours

✕ Compatible with Environ CR/ER/SR floor standing racks

✕ Supplied in packs of 2

✕ Multiple cable tie fixing methods

✕ Side wall return - 10 mm

✕ CIBSE TM65 Embodied Carbon: 63.770 kg CO2e

## Product Overview

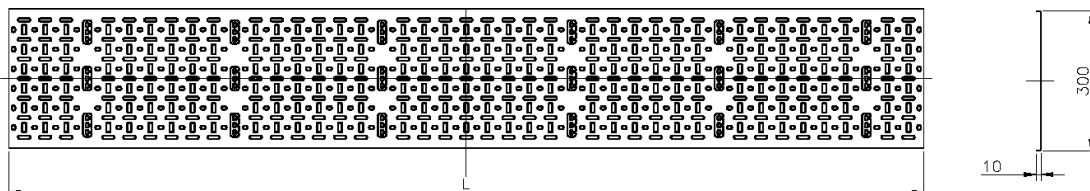
Environ Cable Tray is commonly used to support and manage cabling within a data rack, the ventilated tray has a stamp profile of various size and shape openings which allows for air flow circulation around the cabling and easy fitting of different size cable straps and cable bundles.

Cables can be secured to the tray using either plastic or velcro cable straps, the profile design of the tray makes it easy to ensure that fixing can be achieved wherever needed.

## Product Specifications

Feature	Values
Height	42u
Width	300 mm
Mounting perforation in bottom	yes
Material	Steel
Colour	Grey
RAL-number	9002

## Product drawing



## Part Number Table

Part Number	Description
542-300-20-BK	Environ Cable Tray (2pc) 300mm 20U Black
542-300-24-GE	Environ Cable Tray (2pc) 300mm 24U Grey White
542-300-29-BK	Environ Cable Tray (2pc) 300 mm 29U Black
542-300-29-GE	Environ Cable Tray (2pc) 300 mm 29U Grey White
542-300-32-BK	Environ Cable Tray (2pc) 300 mm 32U Black
542-300-32-GE	Environ Cable Tray (2pc) 300 mm 32U Grey White
542-300-42-BK	Environ Cable Tray (2pc) 300 mm 42U Black
542-300-42-GE	Environ Cable Tray (2pc) 300 mm 42U Grey White
542-300-47-BK	Environ Cable Tray (2pc) 300 mm 47U Black
542-300-47-GE	Environ Cable Tray (2pc) 300 mm 47U Grey White

Excel is a world class premium performing end to end infrastructure solution designed, Manufactured, supported and delivered without compromise.

Contact us at [sales@excel-networking.com](mailto:sales@excel-networking.com)