

# Elevate DCR800 42U Rack 800x1000mm Vented (F) D/Vented (R) B/Panels F/Mgmt Black

Item Code: 546-42810-VDBF-BK



- ✕ Available in 42U, 47U and 52U sizes.
- ✕ High ventilation flat mesh doors front and back
- ✕ Airflow management baffles as standard
- ✕ Improved roof access for large 16A and 32A power plugs
- ✕ Upgraded cable tray fitted both sides
- ✕ Front finger cable management as standard

## Product Overview

The new Elevate DCR data centre racks are a versatile range of 600 mm or 800 mm wide racks designed for the data centre market and based on our successful, market accepted Excel Rack design.

The new DCR racks feature the same flexibility of options and configuration with higher airflow mesh doors, airflow management baffles at the front, finger style cable management and upgraded manual or optional electronic handles.

There is also improved cable access with full depth wide brush strips on the roof, cabinet to cabinet cable routing via side brush openings and mutiple brush entry through the airflow management baffles.

## Product Specifications

| Feature              | Values         |
|----------------------|----------------|
| Mounting Profile     | Front and rear |
| Type of profile rail | L-shaped       |
| Number of doors      | 2              |
| Type of ventilation  | Passive        |
| Width                | 800 mm         |
| Height               | 2000 mm        |
| Depth                | 1000 mm        |
| Modular spacing      | 19 inch        |

# Elevate DCR800 42U Rack 800x1000mm Vented (F) D/Vented (R) B/Panels F/Mgmt Black

Item Code: 546-42810-VDBF-BK



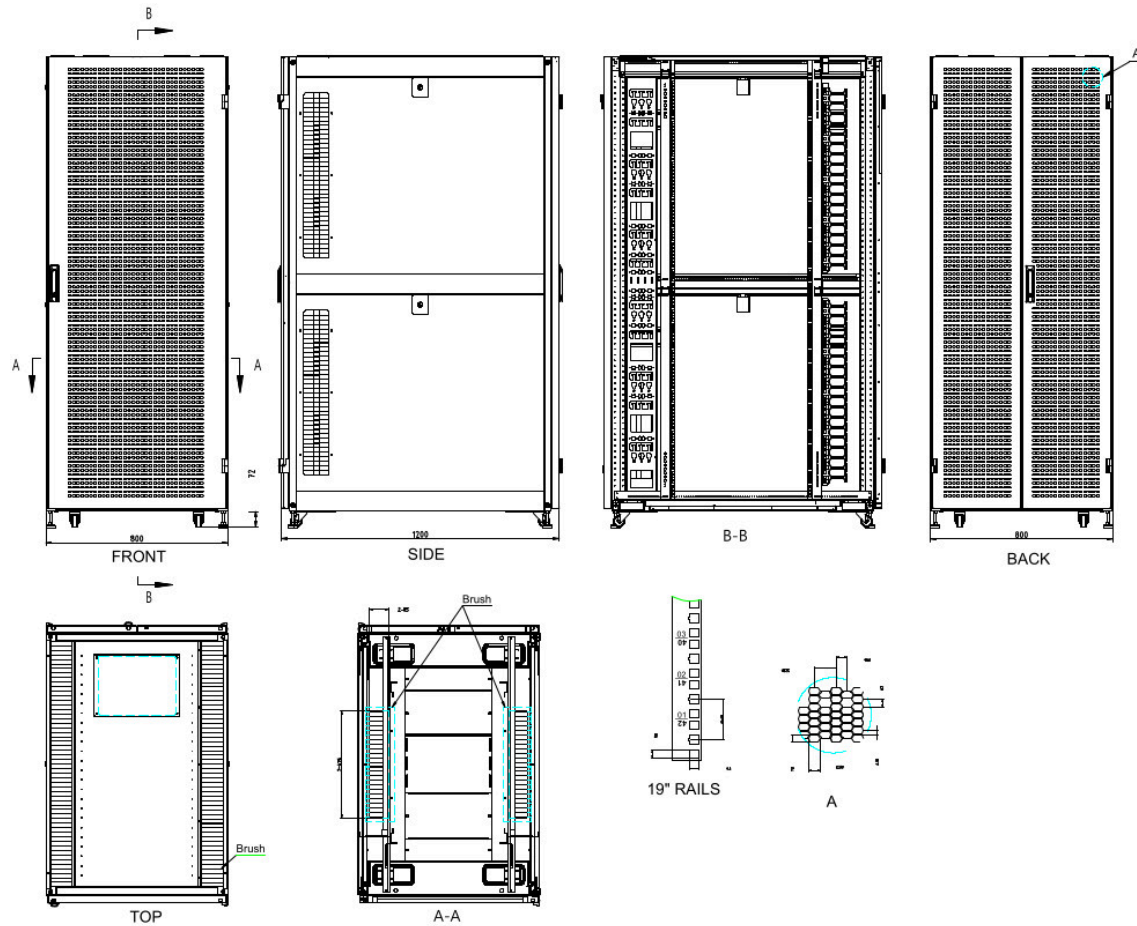
|                                |               |
|--------------------------------|---------------|
| Number of rack units (RU)      | 42            |
| Max. load capacity             | 2000 kg       |
| With roof plate                | yes           |
| With earthing                  | yes           |
| With front door                | yes           |
| Front door material            | Steel         |
| Front door locking system      | Two-point     |
| With rear door                 | yes           |
| Rear door material             | Steel         |
| Rear door locking system       | Three-point   |
| With glazed door               | no            |
| Side panels included           | yes           |
| With vertical cable management | yes           |
| Material                       | Steel         |
| Type of surface                | Powder coated |
| Colour                         | Black         |
| Model                          | DC            |
| RAL-number                     | 9004          |
| Flat-packed                    | no            |
| IP-rating                      | IP20          |
| Application                    | Server Rack   |

# Elevate DCR800 42U Rack 800x1000mm Vented (F) D/Vented (R) B/Panels F/Mgmt Black

Item Code: 546-42810-VDBF-BK

**excel**  
without compromise.

## Product drawing



Elevate DCR800 42U Rack 800x1000mm Vented (F)  
D/Vented (R) B/Panels F/Mgmt Black

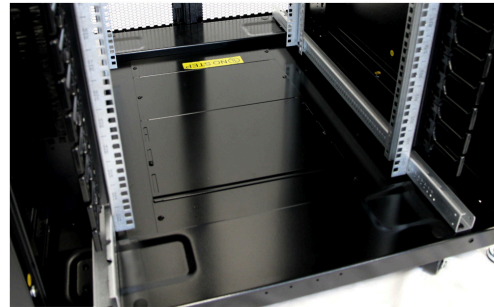
Item Code: 546-42810-VDBF-BK

**excel**  
without compromise.

**Product images**



Roof with full length Brushes



Base with large cable entry



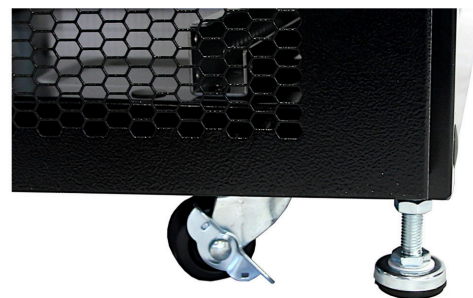
Side Panel Brush Strip and latch



Quick slam latches and position No.s



Profile Double numbering top to bottom



Castors and Jacking Feet as standard



Elevate DCR800 42U Rack 800x1000mm Vented (F)  
D/Vented (R) B/Panels F/Mgmt Black

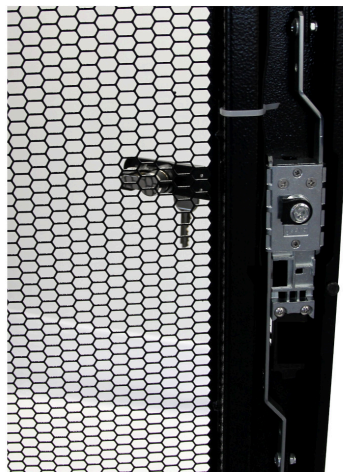
Item Code: 546-42810-VDBF-BK



**Product images**



**Front Swing Handle Mechanical lock**



**80% Ventilation Rate Mesh**



**Front Finger Cable Management**



**Airflow Management Baffles**

# Elevate DCR800 42U Rack 800x1000mm Vented (F) D/Vented (R) B/Panels F/Mgmt Black

Item Code: 546-42810-VDBF-BK



## Standards

| Applicable standard                        | Detail  |
|--|---|
| RoHS-II/-III (2011/65/EU & 2015/863): 2023 | Our products, demonstrate full adherence to the regulatory stipulations of the EU Directive 2011/65/EU (RoHS-II) and its corresponding delegated directive 2015/863 (RoHS-III). |
| WFD: 2023                                  | Compliant to Waste Framework Directive  |
| SCIP: 2023                                 | Compliant - Does Not Contain Substances of Concern In articles as such or in complex objects (Products)   |
| POPs (EU) No 2019/1021                     | EU Regulation for the restriction of Persistent Organic Pollutants.   |

## Part Number Table

| Part Number       | Description  |
|-------------------|--|
| 546-42610-VDBN-BK | Elevate DCR600 42U Rack 600x1000 mm Vented (F) D/Vented (R) B/Panels No/Mgmt Black |
| 546-42612-VDBN-BK | Elevate DCR600 42U Rack 600x1200 mm Vented (F) D/Vented (R) B/Panels No/Mgmt Black |
| 546-42810-VDBF-BK | Elevate DCR800 42U Rack 800x1000mm Vented (F) D/Vented (R) B/Panels F/Mgmt Black   |
| 546-42812-VDBF-BK | Elevate DCR800 42U Rack 800x1200mm Vented (F) D/Vented (R) B/Panels F/Mgmt Black   |
| 546-47610-VDBN-BK | Elevate DCR600 47U Rack 600x1000 mm Vented (F) D/Vented (R) B/Panels No/Mgmt Black |
| 546-47612-VDBN-BK | Elevate DCR600 47U Rack 600x1200 mm Vented (F) D/Vented (R) B/Panels No/Mgmt Black |
| 546-47810-VDBF-BK | Elevate DCR800 47U Rack 800x1000mm Vented (F) D/Vented (R) B/Panels F/Mgmt Black   |
| 546-47812-VDBF-BK | Elevate DCR800 47U Rack 800x1200mm Vented (F) D/Vented (R) B/Panels F/Mgmt Black   |
| 546-52610-VDBN-BK | Elevate DCR600 52U Rack 600x1000 mm Vented (F) D/Vented (R) B/Panels No/Mgmt Black |
| 546-52612-VDBN-BK | Elevate DCR600 52U Rack 600x1200 mm Vented (F) D/Vented (R) B/Panels No/Mgmt Black |
| 546-52810-VDBF-BK | Elevate DCR800 52U Rack 800x1000mm Vented (F) D/Vented (R) B/Panels F/Mgmt Black   |
| 546-52812-VDBF-BK | Elevate DCR800 52U Rack 800x1200mm Vented (F) D/Vented (R) B/Panels F/Mgmt Black   |

Elevate DCR800 42U Rack 800x1000mm Vented (F)  
D/Vented (R) B/Panels F/Mgmt Black

Item Code: 546-42810-VDBF-BK



Excel is a world class premium performing end to end infrastructure solution designed,  
Manufactured, supported and delivered without compromise.

Contact us at [sales@excel-networking.com](mailto:sales@excel-networking.com)



E&OE. Excel is a registered trade name of Mayflex Holdings Ltd.