

Elevate DCR800 42U Rack 800 x 1200 mm Vented (F) D/Vented (R) B/Panels Network Black

Item Code: 546-42812-VDBF-BK



Available in 42U, 47U and 52U sizes

High ventilation flat mesh doors front and back

Airflow management baffles as standard

Entry/exit points in roof compatible with 16A, 32A and 64A EN60309 Commando plugs

Upgraded cable tray fitted both sides

Front finger cable management as standard

CIBSE TM65 Embodied Carbon: 1099.0531 kg CO2e

Product Overview

Elevate DCR Series with Vented Front Door, Double Vented Rear Doors, both side panels and Front Cable Management.

The new Elevate data centre racks are a versatile range of 600mm or 800mm wide racks designed for the data centre market and based on our successful, market accepted Excel Rack design.

The new DCR series feature the same flexibility of options and configuration with higher airflow mesh doors, airflow management baffles at the front, finger style cable management and upgraded manual or optional electronic handles.

There is also improved cable access with full depth wide brush strips on the roof, cabinet to cabinet cable routing via side brush openings and multiple brush entry through the airflow management baffles.

Product Specifications

Feature	Values
Mounting Profile	Front and rear
Type of profile rail	L-shaped
Number of doors	2
Type of ventilation	Passive
Width	800 mm

Elevate DCR800 42U Rack 800 x 1200 mm Vented (F) D/Vented (R) B/Panels Network Black

Item Code: 546-42812-VDBF-BK



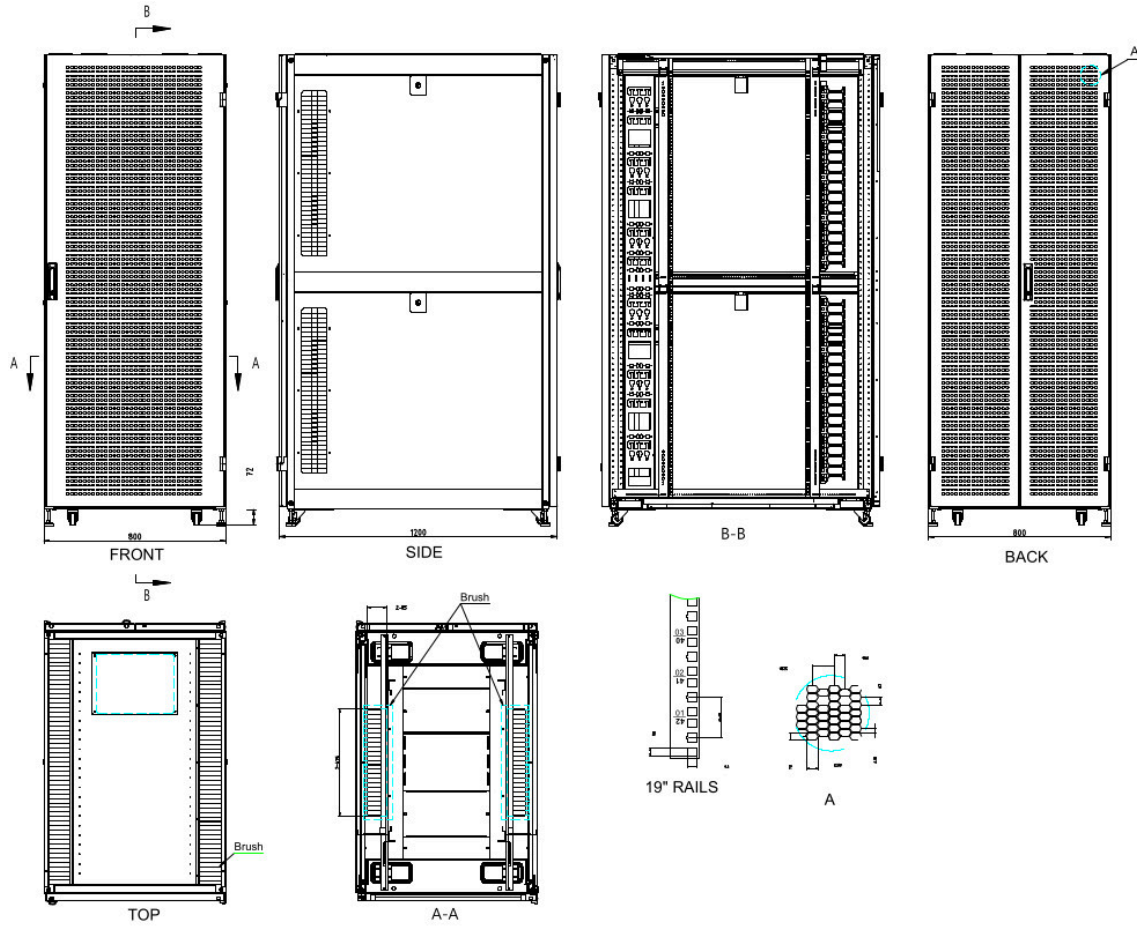
Height	2000 mm
Depth	1200 mm
Modular spacing	19 inch
Number of rack units (RU)	42
Max. load capacity	2000 kg
With roof plate	yes
With earthing	yes
With front door	yes
Front door material	Steel
Front door locking system	Two-point
With rear door	yes
Rear door material	Steel
Rear door locking system	Three-point
With glazed door	no
Side panels included	yes
With vertical cable management	yes
Material	Steel
Type of surface	Powder coated
Colour	Black
Model	DC
RAL-number	9004
Flat-packed	no
IP-rating	IP20
Application	Server Rack

Elevate DCR800 42U Rack 800 x 1200 mm Vented
(F) D/Vented (R) B/Panels Network Black

Item Code: 546-42812-VDBF-BK



Product drawing



Elevate DCR800 42U Rack 800 x 1200 mm Vented
(F) D/Vented (R) B/Panels Network Black

Item Code: 546-42812-VDBF-BK

excel
without compromise.

Product images



Roof with full length Brushes



Base with large cable entry



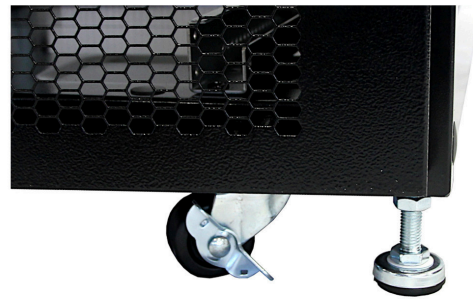
Side Panel Brush Strip and latch



Quick slam latches and position No.s



Profile Double numbering top to bottom



Castors and Jacking Feet as standard

Elevate DCR800 42U Rack 800 x 1200 mm Vented
(F) D/Vented (R) B/Panels Network Black

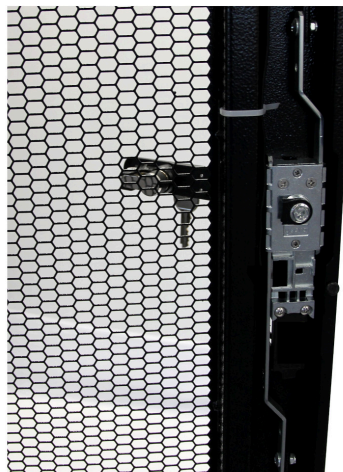
Item Code: 546-42812-VDBF-BK

excel
without compromise.

Product images



Front Swing Handle Mechanical lock



80% Ventilation Rate Mesh



Front Finger Cable Management



Airflow Management Baffles

Elevate DCR800 42U Rack 800 x 1200 mm Vented (F) D/Vented (R) B/Panels Network Black

Item Code: 546-42812-VDBF-BK



Standards

Applicable standard	Detail
Directive 2011/65/EU (RoHS II)	Restriction of the Use of Certain Hazardous Substances in Electrical and Electronic Equipment — compliant. Applies within EU member states).
Directive (EU) 2015/863 (RoHS III)	Amending Directive 2011/65/EU to add four phthalates (DEHP, BBP, DBP, DIBP) to Annex II — compliant.
Directive 2008/98/EC (WFD)	Waste Framework Directive — compliant. Implemented in the UK through the Waste (England and Wales) Regulations 2011 (SI 2011 No. 988).
ECHA SCIP Database	Compliant; product does not contain SVHCs (Substances of Very High Concern) as defined under REACH Article 33(1). Submission obligations met under EU REACH and UK REACH.
Regulation (EU) 2019/1021 (POPs)	EU Regulation on Persistent Organic Pollutants — compliant. For Great Britain, compliance is aligned with the Persistent Organic Pollutants (Amendment) (EU Exit) Regulations 2020 (SI 2020 No. 1355).
UK SI 2012 No. 3032	The Restriction of the Use of Certain Hazardous Substances in Electrical and Electronic Equipment Regulations 2012 (UK RoHS) — compliant for Great Britain. Retained EU law, as amended by the Product Safety and Metrology (Amendment etc.) (EU Exit) Regulations 2019.

Part Number Table

Part Number	Description
546-42610-VDBN-BK	Elevate DCR600 42U Rack 600 x 1000 mm Vented (F) D/Vented (R) B/Panels Server Black
546-42612-VDBN-BK	Elevate DCR600 42U Rack 600 x 1200 mm Vented (F) D/Vented (R) B/Panels Server Black
546-42810-VDBF-BK	Elevate DCR800 42U Rack 800 x 1000 mm Vented (F) D/Vented (R) B/Panels Network Black
546-42812-VDBF-BK	Elevate DCR800 42U Rack 800 x 1200 mm Vented (F) D/Vented (R) B/Panels Network Black
546-47610-VDBN-BK	Elevate DCR600 47U Rack 600 x 1000 mm Vented (F) D/Vented (R) B/Panels Server Black
546-47612-VDBN-BK	Elevate DCR600 47U Rack 600 x 1200 mm Vented (F) D/Vented (R) B/Panels Server Black
546-47810-VDBF-BK	Elevate DCR800 47U Rack 800 x 1000 mm Vented (F) D/Vented (R) B/Panels Network Black

Elevate DCR800 42U Rack 800 x 1200 mm Vented (F) D/Vented (R) B/Panels Network Black

Item Code: 546-42812-VDBF-BK



546-47812-VDBF-BK	Elevate DCR800 47U Rack 800 x 1200 mm Vented (F) D/Vented (R) B/Panels Network Black
546-52610-VDBN-BK	Elevate DCR600 52U Rack 600 x 1000 mm Vented (F) D/Vented (R) B/Panels Server Black
546-52612-VDBN-BK	Elevate DCR600 52U Rack 600 x 1200 mm Vented (F) D/Vented (R) B/Panels Server Black
546-52810-VDBF-BK	Elevate DCR800 52U Rack 800 x 1000 mm Vented (F) D/Vented (R) B/Panels Network Black
546-52812-VDBF-BK	Elevate DCR800 52U Rack 800 x 1200 mm Vented (F) D/Vented (R) B/Panels Network Black

Excel is a world class premium performing end to end infrastructure solution designed, Manufactured, supported and delivered without compromise.

Contact us at sales@excel-networking.com



E&OE. Excel is a registered trade name of Mayflex Holdings Ltd.