

Elevate DCR600 52U Rack 600x1000 mm Vented (F) D/Vented (R) B/Panels No/Mgmt Black

Item Code: 546-52610-VDBN-BK



- ✕ Available in 42U, 47U and 52U sizes
- ✕ High ventilation flat mesh doors front and back
- ✕ Airflow management baffles as standard
- ✕ Entry/exit points in roof compatible with 16 A and 32 A IEC plugs
- ✕ Upgraded cable tray fitted both sides
- ✕ Front finger cable management as standard

Product Overview

Elevate DCR Series with Vented Front Door, Double Vented Rear Doors, both side panels and Front Cable Management.

The new Elevate data centre racks are a versatile range of 600mm or 800mm wide racks designed for the data centre market and based on our successful, market accepted Excel Rack design.

The new DCR series feature the same flexibility of options and configuration with higher airflow mesh doors, airflow management baffles at the front, finger style cable management and upgraded manual or optional electronic handles.

There is also improved cable access with full depth wide brush strips on the roof, cabinet to cabinet cable routing via side brush openings and mutiple brush entry through the airflow management baffles.

Product Specifications

Feature	Values
Mounting Profile	Front and rear
Type of profile rail	L-shaped
Number of doors	2
Type of ventilation	Passive
Width	600 mm
Height	2446 mm
Depth	1000 mm
Modular spacing	19 inch
Number of rack units (RU)	52

Elevate DCR600 52U Rack 600x1000 mm Vented (F) D/Vented (R) B/Panels No/Mgmt Black

Item Code: 546-52610-VDBN-BK



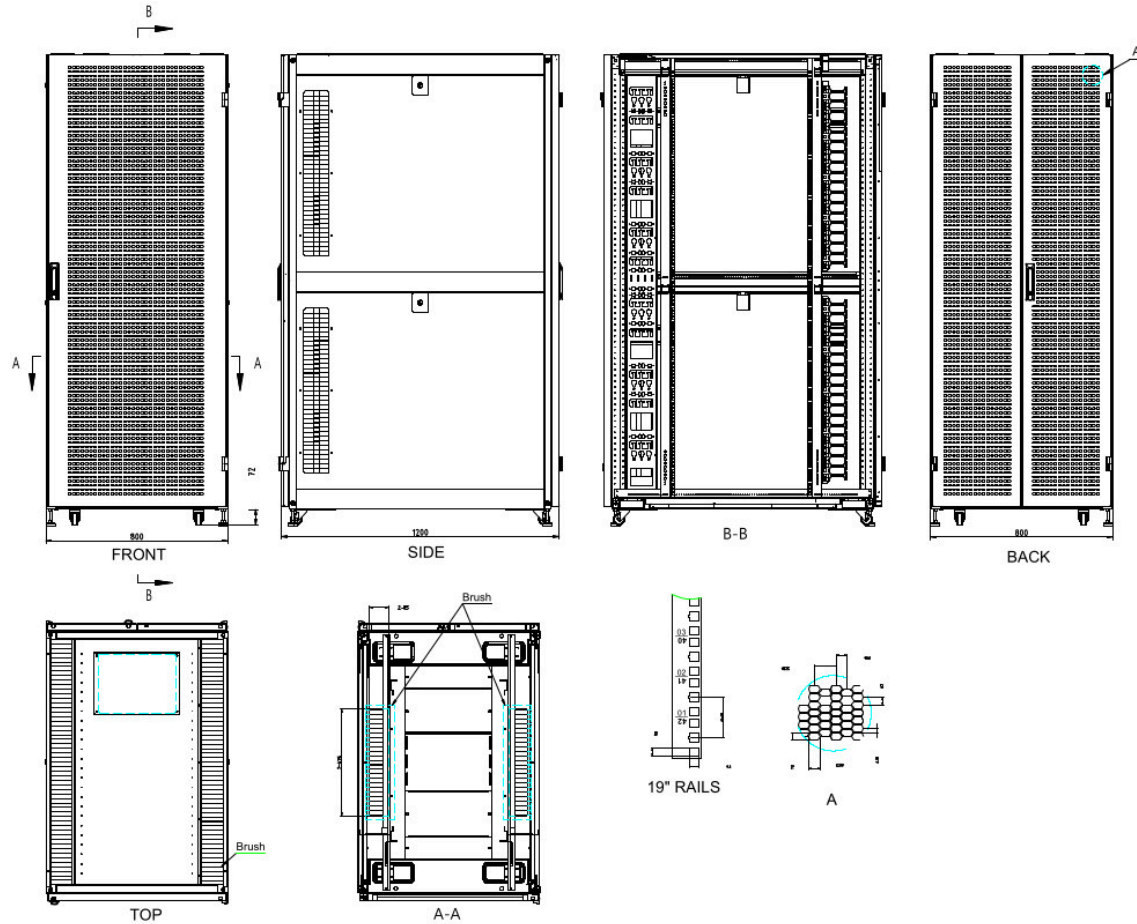
Max. load capacity	2000 kg
With roof plate	yes
With earthing	yes
With front door	yes
Front door material	Steel
Front door locking system	Two-point
With rear door	yes
Rear door material	Steel
Rear door locking system	Three-point
With glazed door	no
Side panels included	yes
With vertical cable management	no
Material	Steel
Type of surface	Powder coated
Colour	Black
Model	DC
RAL-number	9004
Flat-packed	no
IP-rating	IP20
Application	Server Rack

Elevate DCR600 52U Rack 600x1000 mm Vented
(F) D/Vented (R) B/Panels No/Mgmt Black

Item Code: 546-52610-VDBN-BK

excel
without compromise.

Product drawing



Elevate DCR600 52U Rack 600x1000 mm Vented (F) D/Vented (R) B/Panels No/Mgmt Black

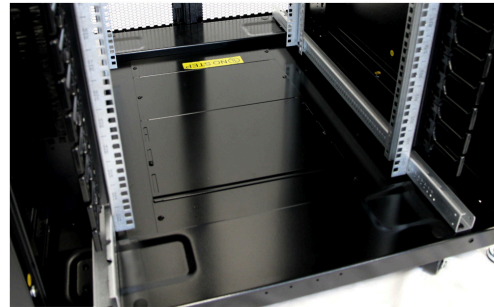
Item Code: 546-52610-VDBN-BK

excel
without compromise.

Product images



Roof with full length Brushes



Base with large cable entry



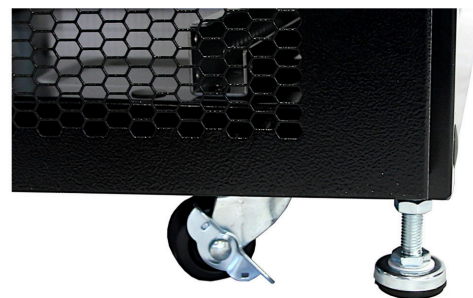
Side Panel Brush Strip and latch



Quick slam latches and position No.s



Profile Double numbering top to bottom



Castors and Jacking Feet as standard

Elevate DCR600 52U Rack 600x1000 mm Vented
(F) D/Vented (R) B/Panels No/Mgmt Black

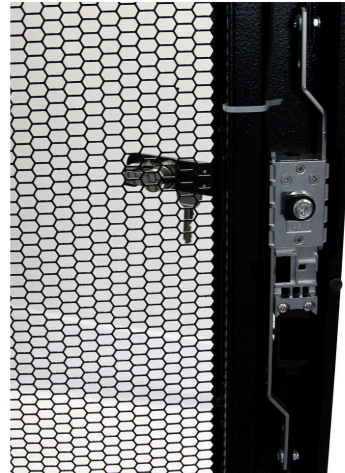
Item Code: 546-52610-VDBN-BK



Product images



Front Swing Handle Mechanical lock



80% Ventilation Rate Mesh



Front Finger Cable Management



Airflow Management Baffles

Elevate DCR600 52U Rack 600x1000 mm Vented (F) D/Vented (R) B/Panels No/Mgmt Black

Item Code: 546-52610-VDBN-BK



Standards

Applicable standard	Detail
RoHS-II/-III (2011/65/EU & 2015/863): 2023	Our products, demonstrate full adherence to the regulatory stipulations of the EU Directive 2011/65/EU (RoHS-II) and its corresponding delegated directive 2015/863 (RoHS-III).
WFD: 2023	Compliant to Waste Framework Directive
SCIP: 2023	Compliant - Does Not Contain Substances of Concern In articles as such or in complex objects (Products)
POPs (EU) No 2019/1021	EU Regulation for the restriction of Persistent Organic Pollutants.

Part Number Table

Part Number	Description
546-42610-VDBN-BK	Elevate DCR600 42U Rack 600x1000 mm Vented (F) D/Vented (R) B/Panels No/Mgmt Black
546-42612-VDBN-BK	Elevate DCR600 42U Rack 600x1200 mm Vented (F) D/Vented (R) B/Panels No/Mgmt Black
546-42810-VDBF-BK	Elevate DCR800 42U Rack 800x1000mm Vented (F) D/Vented (R) B/Panels F/Mgmt Black
546-42812-VDBF-BK	Elevate DCR800 42U Rack 800x1200mm Vented (F) D/Vented (R) B/Panels F/Mgmt Black
546-47610-VDBN-BK	Elevate DCR600 47U Rack 600x1000 mm Vented (F) D/Vented (R) B/Panels No/Mgmt Black
546-47612-VDBN-BK	Elevate DCR600 47U Rack 600x1200 mm Vented (F) D/Vented (R) B/Panels No/Mgmt Black
546-47810-VDBF-BK	Elevate DCR800 47U Rack 800x1000mm Vented (F) D/Vented (R) B/Panels F/Mgmt Black
546-47812-VDBF-BK	Elevate DCR800 47U Rack 800x1200mm Vented (F) D/Vented (R) B/Panels F/Mgmt Black
546-52610-VDBN-BK	Elevate DCR600 52U Rack 600x1000 mm Vented (F) D/Vented (R) B/Panels No/Mgmt Black
546-52612-VDBN-BK	Elevate DCR600 52U Rack 600x1200 mm Vented (F) D/Vented (R) B/Panels No/Mgmt Black
546-52810-VDBF-BK	Elevate DCR800 52U Rack 800x1000mm Vented (F) D/Vented (R) B/Panels F/Mgmt Black
546-52812-VDBF-BK	Elevate DCR800 52U Rack 800x1200mm Vented (F) D/Vented (R) B/Panels F/Mgmt Black

Elevate DCR600 52U Rack 600x1000 mm Vented
(F) D/Vented (R) B/Panels No/Mgmt Black

Item Code: 546-52610-VDBN-BK



Excel is a world class premium performing end to end infrastructure solution designed,
Manufactured, supported and delivered without compromise.

Contact us at sales@excel-networking.com



E&OE. Excel is a registered trade name of Mayflex Holdings Ltd.