

# Elevate DCR800 52U Rack 800 x 1000 mm Vented (F) D/Vented (R) B/Panels Network Black

Part Code: 546-52810-VDBF-BK

sales@excel-networking.com  
excel-networking.com



## Main Features

- / Available in 42U, 47U and 52U sizes
- / Airflow management baffles as standard with cable management
- / Upgraded cable tray fitted both sides
- / High ventilation flat mesh doors front and back
- / Entry/exit points in roof compatible with 16A, 32A and 64A EN60309 Commando plugs
- / Front finger cable management as standard

## Product Overview

Elevate DCR Series Network Model with Vented Front Door, Double Vented Rear Doors, both side panels and Front Cable Management. The new Elevate data centre racks are a versatile range of 600 mm or 800 mm wide racks designed for the data centre market and based on our successful, market accepted Excel Rack design.

The new DCR series feature the same flexibility of options and configuration with higher airflow mesh doors, airflow management baffles at the front, finger style cable management and upgraded manual or optional electronic handles.

There is also improved cable access with full depth wide brush strips on the roof, cabinet to cabinet cable routing via side brush openings and multiple brush entry through the airflow management baffles.

# Elevate DCR800 52U Rack 800 x 1000 mm Vented (F) D/Vented (R) B/Panels Network Black

Part Code: 546-52810-VDBF-BK

sales@excel-networking.com  
excel-networking.com

## Product Specifications

Feature	Values
Mounting Profile	Front and rear
Type of profile rail	L-shaped
Number of doors	2
Type of ventilation	Passive
Width	800 mm
Height	2446 mm
Depth	1000 mm
Modular spacing	19 inch
Number of rack units (RU)	52
Max. load capacity	2000 kg
With roof plate	yes
With earthing	yes
With front door	yes
Front door material	Steel
Front door locking system	Two-point
With rear door	yes
Rear door material	Steel
Rear door locking system	Three-point
With glazed door	no
Side panels included	yes
With vertical cable management	yes
Material	Steel

# Elevate DCR800 52U Rack 800 x 1000 mm Vented (F) D/Vented (R) B/Panels Network Black

Part Code: 546-52810-VDBF-BK

sales@excel-networking.com  
excel-networking.com

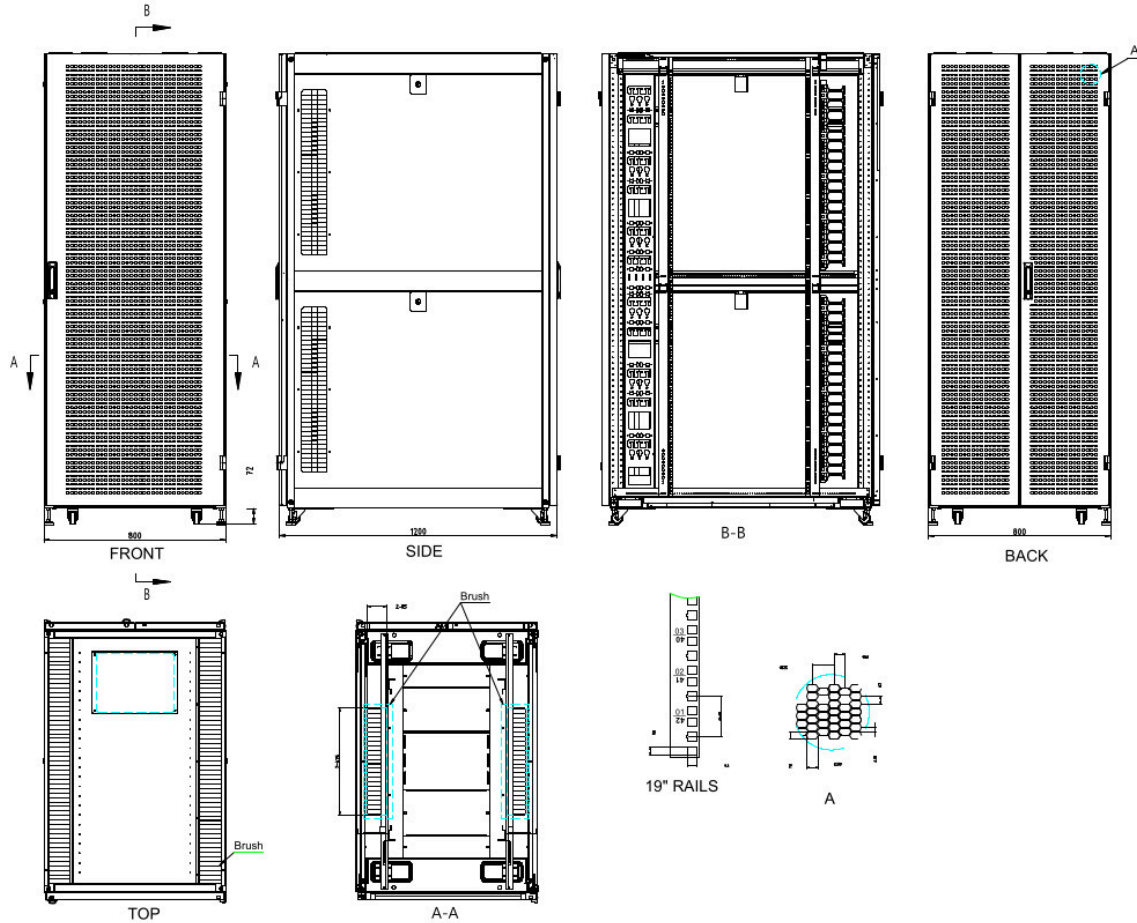
Type of surface	<b>Powder coated</b>
Colour	<b>Black</b>
Model	<b>DCR</b>
RAL-number	<b>9004</b>
Flat-packed	<b>no</b>
IP-rating	<b>IP20</b>
Application	<b>Data Centre Rack</b>

# Elevate DCR800 52U Rack 800 x 1000 mm Vented (F) D/Vented (R) B/Panels Network Black

Part Code: 546-52810-VDBF-BK

sales@excel-networking.com  
excel-networking.com

## Product drawing



# Elevate DCR800 52U Rack 800 x 1000 mm Vented (F) D/Vented (R) B/Panels Network Black

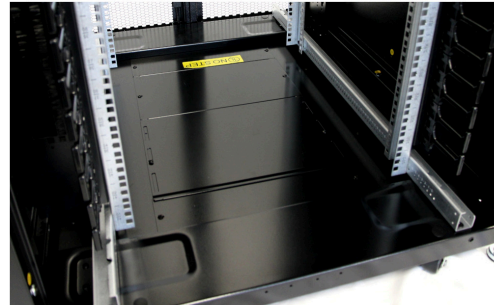
Part Code: 546-52810-VDBF-BK

sales@excel-networking.com  
excel-networking.com

## Product images



Roof with full length Brushes



Base with large cable entry



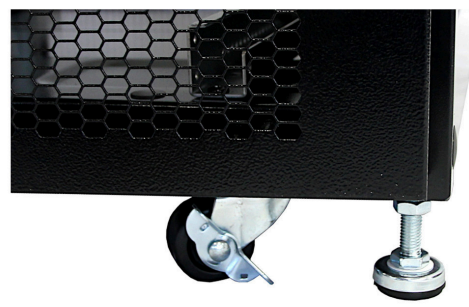
Side Panel Brush Strip and latch



Quick slam latches and position No.s



Profile Double numbering top to bottom



Castors and Jacking Feet as standard

# Elevate DCR800 52U Rack 800 x 1000 mm Vented (F) D/Vented (R) B/Panels Network Black

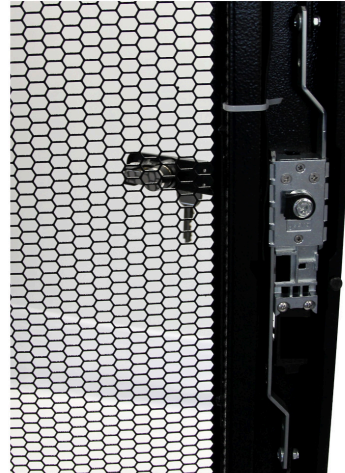
Part Code: 546-52810-VDBF-BK

sales@excel-networking.com  
excel-networking.com

## Product images



**Front Swing Handle Mechanical lock**



**80% Ventilation Rate Mesh**



**Front Finger Cable Management**



**Airflow Management Baffles**

# Elevate DCR800 52U Rack 800 x 1000 mm Vented (F) D/Vented (R) B/Panels Network Black

Part Code: 546-52810-VDBF-BK

sales@excel-networking.com  
excel-networking.com

## Standards

Applicable standard	Detail
Directive 2011/65/EU (RoHS II)	Restriction of the Use of Certain Hazardous Substances in Electrical and Electronic Equipment — compliant. Applies within EU member states).
Directive (EU) 2015/863 (RoHS III)	Amending Directive 2011/65/EU to add four phthalates (DEHP, BBP, DBP, DIBP) to Annex II — compliant.
Directive 2008/98/EC (WFD)	Waste Framework Directive — compliant. Implemented in the UK through the Waste (England and Wales) Regulations 2011 (SI 2011 No. 988).
ECHA SCIP Database	Compliant; product does not contain SVHCs (Substances of Very High Concern) as defined under REACH Article 33(1). Submission obligations met under EU REACH and UK REACH.
Regulation (EU) 2019/1021 (POPs)	EU Regulation on Persistent Organic Pollutants — compliant. For Great Britain, compliance is aligned with the Persistent Organic Pollutants (Amendment) (EU Exit) Regulations 2020 (SI 2020 No. 1355).
UK SI 2012 No. 3032	The Restriction of the Use of Certain Hazardous Substances in Electrical and Electronic Equipment Regulations 2012 (UK RoHS) — compliant for Great Britain. Retained EU law, as amended by the Product Safety and Metrology (Amendment etc.) (EU Exit) Regulations 2019.

## Part Code Table

Part Code	Description
546-42610-VDBN-BK	<b>Elevate DCR600 42U Rack 600 x 1000 mm Vented (F) D/Vented (R) B/Panels Server Black</b>
546-42612-VDBN-BK	<b>Elevate DCR600 42U Rack 600 x 1200 mm Vented (F) D/Vented (R) B/Panels Server Black</b>

# Elevate DCR800 52U Rack 800 x 1000 mm Vented (F) D/Vented (R) B/Panels Network Black

Part Code: 546-52810-VDBF-BK

sales@excel-networking.com  
excel-networking.com

546-42810-VDBF-BK	<b>Elevate DCR800 42U Rack 800 x 1000 mm Vented (F) D/Vented (R) B/Panels Network Black</b>
546-42812-VDBF-BK	<b>Elevate DCR800 42U Rack 800 x 1200 mm Vented (F) D/Vented (R) B/Panels Network Black</b>
546-47610-VDBN-BK	<b>Elevate DCR600 47U Rack 600 x 1000 mm Vented (F) D/Vented (R) B/Panels Server Black</b>
546-47612-VDBN-BK	<b>Elevate DCR600 47U Rack 600 x 1200 mm Vented (F) D/Vented (R) B/Panels Server Black</b>
546-47810-VDBF-BK	<b>Elevate DCR800 47U Rack 800 x 1000 mm Vented (F) D/Vented (R) B/Panels Network Black</b>
546-47812-VDBF-BK	<b>Elevate DCR800 47U Rack 800 x 1200 mm Vented (F) D/Vented (R) B/Panels Network Black</b>
546-52610-VDBN-BK	<b>Elevate DCR600 52U Rack 600 x 1000 mm Vented (F) D/Vented (R) B/Panels Server Black</b>
546-52612-VDBN-BK	<b>Elevate DCR600 52U Rack 600 x 1200 mm Vented (F) D/Vented (R) B/Panels Server Black</b>
546-52810-VDBF-BK	<b>Elevate DCR800 52U Rack 800 x 1000 mm Vented (F) D/Vented (R) B/Panels Network Black</b>
546-52812-VDBF-BK	<b>Elevate DCR800 52U Rack 800 x 1200 mm Vented (F) D/Vented (R) B/Panels Network Black</b>