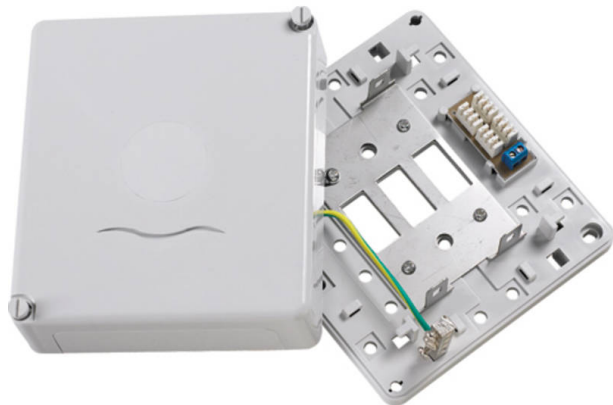


Excel 2 Way (20 Pair) Connection Box - Loaded with 2 x 10 Pair Terminal Strips

Item Code: 550-261

excel
without compromise.



✕ Available as 2-way/3-way

✕ Available as loaded/unloaded

✕ 20/30 Pair Capacity Using Standard Terminal Strips

✕ Cable Tie Fixings

✕ Suits all Terminal Strips

✕ Supports Protector Strip 51A

Product Overview

The Excel 200 Series accepts standard 237A IDC Connection Strips. Full wire management features are built into the base and the cover provides ample knockouts for cable entry.

Product Specifications

Feature	Values
Model	Distributor box
Mounting method	Surface mounted (plaster)
LSA	Yes (237A included)
Material	Plastic
Colour	White
Height	143 mm
Width	160 mm
Depth	54.5 mm
Number of mountable connection strips	2

Excel 2 Way (20 Pair) Connection Box - Loaded with 2 x 10 Pair Terminal Strips

Item Code: 550-261



Standards

Applicable standard	Detail
RoHS	Restriction of Hazardous Substances - Compliant

Part Number Table

Part Number	Description
550-260	Excel 2 Way (20 Pair) Connection Box - Unloaded
550-261	Excel 2 Way (20 Pair) Connection Box - Loaded with 2 x 10 Pair Terminal Strips
550-262	Excel 3 Way (30 Pair) Connection Box - Unloaded
550-263	Excel 3 Way (30 Pair) Connection Box - Loaded with 3 x 10 Pair Terminal Strips

Excel is a world class premium performing end to end infrastructure solution designed, Manufactured, supported and delivered without compromise.

Contact us at sales@excel-networking.com



E&OE. Excel is a registered trade name of Mayflex Holdings Ltd.