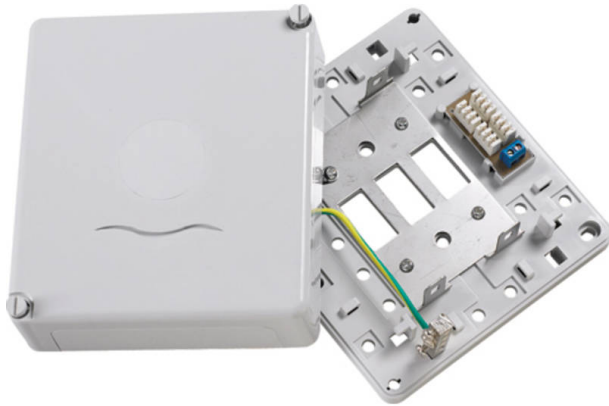


Excel 3 Way (30 Pair) Connection Box Loaded with 3x 10 Pair Terminal Strips

Item Code: 550-263

excel
without compromise.



✕ Available as 2-way/3-way

✕ Available as loaded/unloaded

✕ 20/30 Pair Capacity Using Standard Terminal Strips

✕ Cable Tie Fixings

✕ Suits all Terminal Strips

✕ Supports Protector Strip 51A

✕ Dimension -160(W) x 145(D) x 55(H)

Product Overview

The Excel 200 Series accepts standard 237A IDC Connection Strips. Full wire management features are built into the base and the cover provides ample knockouts for cable entry.

Product Specifications

Feature	Values
Model	Distributor box
Mounting method	Surface mounted
LSA	Yes (237A included)
Material	Plastic
Colour	White
Height	143 mm
Width	160 mm
Depth	54.5 mm
Number of mountable connection strips	3

Excel 3 Way (30 Pair) Connection Box Loaded with 3x 10 Pair Terminal Strips

Item Code: 550-263



Standards

Applicable standard	Detail
RoHS-II/-III (2011/65/EU & 2015/863): 2023	Our products, demonstrate full adherence to the regulatory stipulations of the EU Directive 2011/65/EU (RoHS-II) and its corresponding delegated directive 2015/863 (RoHS-III).
WFD: 2023	Compliant to Waste Framework Directive
SCIP: 2023	Compliant - Does Not Contain Substances of Concern In articles as such or in complex objects (Products)
POPs (EU) No 2019/1021	EU Regulation for the restriction of Persistent Organic Pollutants.

Part Number Table

Part Number	Description
550-260	Excel 2 Way (20 Pair) Connection Box Unloaded
550-261	Excel 2 Way (20 Pair) Connection Box Loaded with 2x 10 Pair Terminal Strips
550-262	Excel 3 Way (30 Pair) Connection Box Unloaded
550-263	Excel 3 Way (30 Pair) Connection Box Loaded with 3x 10 Pair Terminal Strips

Excel is a world class premium performing end to end infrastructure solution designed, Manufactured, supported and delivered without compromise.

Contact us at sales@excel-networking.com



E&OE. Excel is a registered trade name of Mayflex Holdings Ltd.