

Excel 6 Way Horizontal PDU 6x C13 Socket Passive 10A C14 Plug Switched

Item Code: 555-240



- ✕ IEC 60320 C13 style sockets
- ✕ High quality, light weight aluminium housing
- ✕ LED indicated unit power
- ✕ Choose from vertical and horizontal mounting options
- ✕ 250 volt AC, 50/60Hz Rating
- ✕ CE compliant, ROHS compliant
- ✕ External earth facility

Product Overview

Excel range of power distribution units are designed for installation and use within 19" networking cabinets and enclosures. Each unit comprises a high quality aluminium extruded housing into which are loaded up to 12 sockets.

The 10 Amp PDUs benefit from having a master power switch.

Product Specifications

Feature	Values
Mounting dimension	19 inch
Mounting direction	Horizontal
Electrical connection	Connecting cord with plug
Type of electric plug connection	C14
Cable length	3 m
Number of C13 socket outlets	6
Number of rack units (RU)	1
Width	482.6 mm

Excel 6 Way Horizontal PDU 6x C13 Socket Passive 10A C14 Plug Switched

Item Code: 555-240



Height	45 mm
Depth	45 mm
Supply voltage	250 V
Surge Protected	no
Switchable	yes
With LED indication	yes
With fuse	no
With mounting bracket	yes

Additional specifications

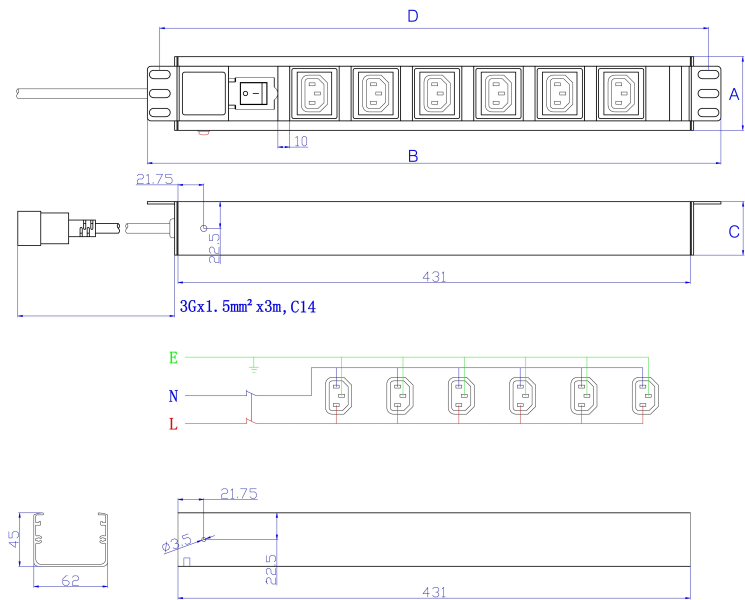
Features	Values
Rated Voltage	250 V AC 50/60 Hz
Rated current	10A
Maximum power	2500 W
Unit control	LED indicator. On/off rocker switch
Insulation Resistance	$\geq 5\text{M}\Omega$
Fire resistance	Flame retardant
Operating temperature	-10°C to +45°C
Relative humidity	0% to 90%
Cable entry (horizontal orientation)	Left
Cable entry (vertical orientation)	Top
Socket angle (horizontal orientation)	90°
Socket angle (vertical orientation)	45°
Master Switch	Yes
Housing colour	Silver
Housing material	Aluminium

Excel 6 Way Horizontal PDU 6x C13 Socket Passive
10A C14 Plug Switched

Item Code: 555-240



Product drawing



Key	
A	Height
B	Width
C	Depth
D	Mounting Centres

All dimensions are in mm
unless stated otherwise

Standards

Applicable standard	Detail
RoHS-II/-III (2011/65/EU & 2015/863): 2023	Our products, demonstrate full adherence to the regulatory stipulations of the EU Directive 2011/65/EU (RoHS-II) and its corresponding delegated directive 2015/863 (RoHS-III).
IEC 60884-1:2002 + AMD1:2006 + AMD2:2013 CSV	Plugs and socket-outlets for household and similar purposes - Part1: General requirements
IEC 60884-2-1:2006	Plugs and socket-outlets for household and similar purposes - Part 2-1: Particular requirements for fused plugs
IEC 60884-2-2:2006	Plugs and socket-outlets for household and similar purposes - Part 2-2: Particular requirements for socket-outlets for appliances
IEC 60884-2-7:2011 + AMD1:2013 CSV	Plugs and socket-outlets for household and similar purposes - Part 2-7: Particular requirements for cord extension sets
WFD: 2023	Compliant to Waste Framework Directive
SCIP: 2023	Compliant - Does Not Contain Substances of Concern In articles as such or in complex objects (Products)
POPs (EU) No 2019/1021	EU Regulation for the restriction of Persistent Organic

Excel 6 Way Horizontal PDU 6x C13 Socket Passive
10A C14 Plug Switched

Item Code: 555-240



Pollutants.

Part Number Table

Part Number	Description
555-240	Excel 6 Way Horizontal PDU 6x C13 Socket Passive 10A C14 Plug Switched

Excel is a world class premium performing end to end infrastructure solution designed,
Manufactured, supported and delivered without compromise.

Contact us at sales@excel-networking.com



E&OE. Excel is a registered trade name of Mayflex Holdings Ltd.