

Excel 6 Way Horizontal PDU 6x C13 Socket Passive 10 A C20 Plug Switched

Item Code: 555-266

excel
without compromise.



✕ IEC 60320 C13 style sockets

✕ High quality, light weight aluminium housing

✕ LED indicated unit power

✕ Choose from vertical and horizontal options

✕ 250 volt AC, 50/60 Hz rating

✕ CE compliant, ROHS compliant

✕ CIBSE TM65 Embodied Carbon: 11.808 kg CO2e

Product Overview

The Excel range of power distribution units are designed for installation and use within 19" networking cabinets and enclosures. Each unit comprises a high quality aluminium extruded housing into which are loaded up to 12 sockets. In this particular range each socket is IEC C13 style, the 3 metre input lead is terminated with a C20 3 pin plug.

The range of available units includes 19" horizontally mounted, and higher density vertical mounted options, each unit contains a fully shrouded switch to control input power, and a LED indicator to confirm power to the unit.

Product Specifications

Feature	Values
Mounting size	482 mm
Mounting direction	Horizontal
Electrical connection	Connecting cord with plug
Type of electric plug connection	C20
Cable length	3 m
Number of C13 socket outlets	6
Number of rack units (RU)	2

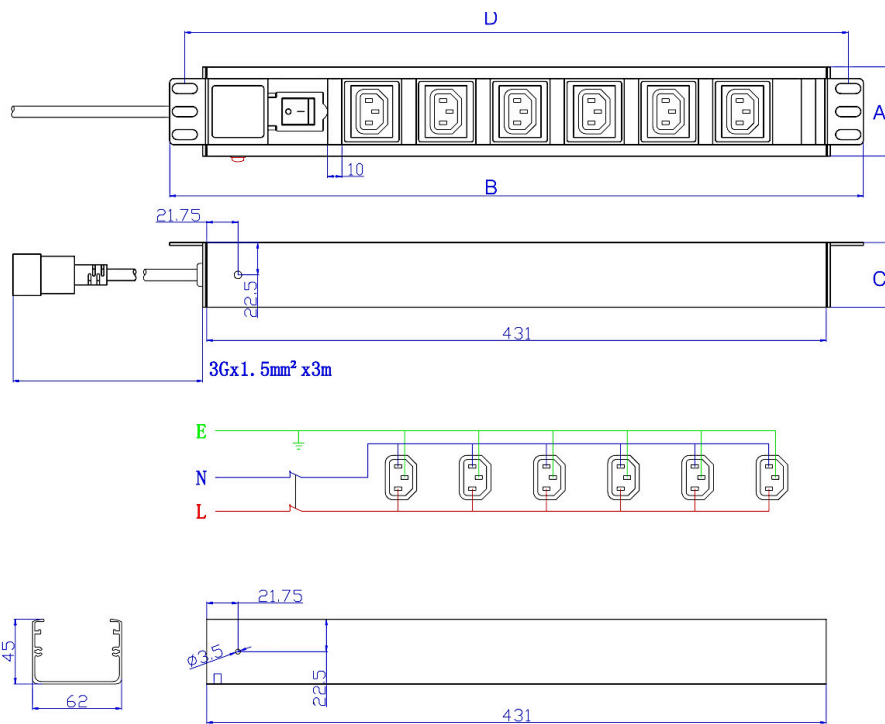
Excel 6 Way Horizontal PDU 6x C13 Socket Passive 10 A C20 Plug Switched

Item Code: 555-266

excel
without compromise.

Width	482.6 mm
Height	62 mm
Depth	45 mm
Supply voltage	250 V
Surge Protected	no
Switchable	yes
With LED indication	yes
With fuse	no
With mounting bracket	yes

Product drawings



Key	
A	Height
B	Width
C	Depth
D	Mounting Centres

All dimensions are in mm unless stated otherwise

Excel 6 Way Horizontal PDU 6x C13 Socket Passive 10 A C20 Plug Switched

Item Code: 555-266



Additional specifications

Features	Values
Rated voltage	250 V AC 50/60 Hz
Rated current	10 A
Maximum power	2500 W
Unit control	LED indicator (on/off rocker switch)
Insulation resistance	$\geq 5 \text{ M}\Omega$
Fire resistance	Flame retardant
Operating temperature	-10 °C to +45 °C
Relative humidity	0% to 90%
Cable entry (horizontal orientation)	Left
Cable entry (vertical orientation)	Top
Socket angle	90 °
Master circuit breaker	No
Master switch	Yes
Housing colour	Silver
Housing material	Aluminum

Included accessories

Accessories	Quantity
M6 x 4 fixings	x4
User manual	x1
6 mm earth cable	x1

Standards

Applicable standard	Detail
IEC 60884-1:2002 + AMD1:2006 + AMD2:2013 CSV	Plugs and socket-outlets for household and similar purposes - Part1: General requirements
IEC 60884-2-1:2006	Plugs and socket-outlets for household and similar purposes - Part 2-1: Particular requirements for fused plugs

Excel 6 Way Horizontal PDU 6x C13 Socket Passive 10 A C20 Plug Switched

Item Code: 555-266



IEC 60884-2-2:2006

Plugs and socket-outlets for household and similar purposes - Part 2-2: Particular requirements for socket-outlets for appliances

IEC 60884-2-7:2011 + AMD1:2013 CSV

Plugs and socket-outlets for household and similar purposes - Part 2-7: Particular requirements for cord extension sets

RoHS-II/-III (2011/65/EU & 2015/863): 2023

Our products, demonstrate full adherence to the regulatory stipulations of the EU Directive 2011/65/EU (RoHS-II) and its corresponding delegated directive 2015/863 (RoHS-III).

WFD: 2023

Compliant to Waste Framework Directive

SCIP: 2023

Compliant - Does Not Contain Substances of Concern In articles as such or in complex objects (Products)

POPs (EU) No 2019/1021

EU Regulation for the restriction of Persistent Organic Pollutants.

Part Number Table

Part Number	Description
555-266	Excel 6 Way Horizontal PDU 6x C13 Socket Passive 10 A C20 Plug Switched

Excel is a world class premium performing end to end infrastructure solution designed, Manufactured, supported and delivered without compromise.

Contact us at sales@excel-networking.com



E&OE. Excel is a registered trade name of Mayflex Holdings Ltd.