

Excel 12 Way Vertical PDU 12x C13 Socket Passive 10 A C20 Plug Switched

excel
without compromise.

Part Code: 555-269

sales@excel-networking.com
excel-networking.com

CIBSE TM65 Embodied Carbon: 13.661 kg CO2e



Main Features

- / IEC 60320 C13 style sockets
- / LED indicated unit power
- / 250 volt AC, 50/60 Hz rating
- / High quality, light weight aluminium housing
- / Choose from vertical and horizontal options
- / CE compliant, ROHS complaint

Product Overview

The Excel range of power distribution units are designed for installation and use within 19" networking cabinets and enclosures. Each unit comprises a high quality aluminium extruded housing into which are loaded up to 12 sockets. In this particular range each socket is IEC C13 style, the 3 metre input lead is terminated with a C20 3 pin plug.

The range of available units includes 19" horizontally mounted, and higher density vertical mounted options, each unit contains a fully shrouded switch to control input power, and a LED indicator to confirm power to the unit.

Excel 12 Way Vertical PDU 12x C13 Socket Passive 10 A C20 Plug Switched

Part Code: 555-269

sales@excel-networking.com
excel-networking.com

Product Specifications

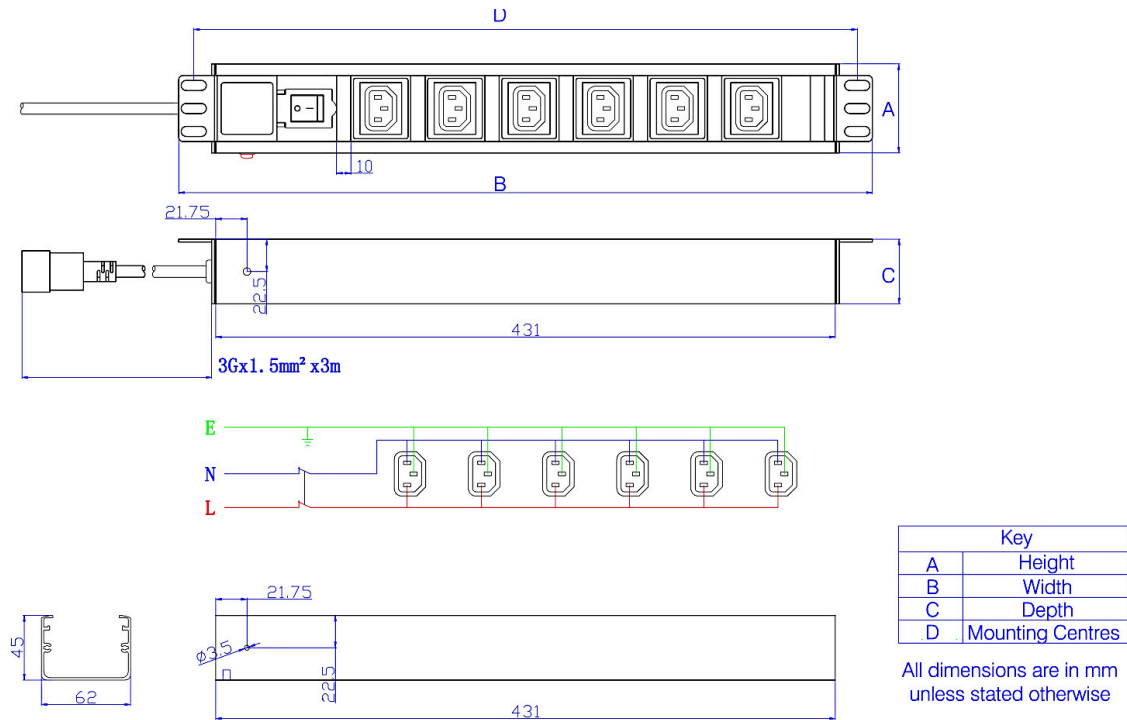
Feature	Values
Mounting size	719 mm
Mounting direction	Vertical
Electrical connection	Connecting cord with plug
Type of electric plug connection	C20
Cable length	3 m
Number of C13 socket outlets	12
Number of rack units (RU)	2
Length	719 mm
Width	44.4 mm
Height	62 mm
Supply voltage	250 V
Surge Protected	no
Switchable	yes
With LED indication	yes
With fuse	no
With mounting bracket	yes

Excel 12 Way Vertical PDU 12x C13 Socket Passive 10 A C20 Plug Switched

Part Code: 555-269

sales@excel-networking.com
excel-networking.com

Product drawings



Additional specifications

Features	Values
Rated voltage	250 V AC 50/60 Hz
Rated current	10 A
Maximum power	2500 W
Unit control	LED indicator (on/off rocker switch)
Insulation resistance	≥ 5 MΩ
Fire resistance	Flame retardant
Operating temperature	-10 °C to +45 °C
Relative humidity	0% to 90%

Excel 12 Way Vertical PDU 12x C13 Socket Passive 10 A C20 Plug Switched

Part Code: 555-269

sales@excel-networking.com
excel-networking.com

Cable entry (horizontal orientation)	Left
Cable entry (vertical orientation)	Top
Socket angle	90 °
Master circuit breaker	No
Master switch	Yes
Housing colour	Silver
Housing material	Aluminum

Included accessories

Accessories	Quantity
M6 x 4 fixings	x4
User manual	x1
6 mm earth cable	x1

Standards

Applicable standard	Detail
IEC 60884-1:2002 + AMD1:2006 + AMD2:2013 CSV	Plugs and socket-outlets for household and similar purposes - Part1: General requirements
IEC 60884-2-1:2006	Plugs and socket-outlets for household and similar purposes - Part 2-1: Particular requirements for fused plugs
IEC 60884-2-2:2006	Plugs and socket-outlets for household and similar purposes - Part 2-2: Particular requirements for socket-outlets for appliances

Excel 12 Way Vertical PDU 12x C13 Socket Passive 10 A C20 Plug Switched

Part Code: 555-269

sales@excel-networking.com
excel-networking.com

IEC 60884-2-7:2011 + AMD1:2013 CSV	Plugs and socket-outlets for household and similar purposes - Part 2-7: Particular requirements for cord extension sets
Directive 2011/65/EU (RoHS II)	Restriction of the Use of Certain Hazardous Substances in Electrical and Electronic Equipment — compliant. Applies within EU member states).
Directive (EU) 2015/863 (RoHS III)	Amending Directive 2011/65/EU to add four phthalates (DEHP, BBP, DBP, DIBP) to Annex II — compliant.
Directive 2008/98/EC (WFD)	Waste Framework Directive — compliant. Implemented in the UK through the Waste (England and Wales) Regulations 2011 (SI 2011 No. 988).
ECHA SCIP Database	Compliant; product does not contain SVHCs (Substances of Very High Concern) as defined under REACH Article 33(1). Submission obligations met under EU REACH and UK REACH.
Regulation (EU) 2019/1021 (POPs)	EU Regulation on Persistent Organic Pollutants — compliant. For Great Britain, compliance is aligned with the Persistent Organic Pollutants (Amendment) (EU Exit) Regulations 2020 (SI 2020 No. 1355).
UK SI 2012 No. 3032	The Restriction of the Use of Certain Hazardous Substances in Electrical and Electronic Equipment Regulations 2012 (UK RoHS) — compliant for Great Britain. Retained EU law, as amended by the Product Safety and Metrology (Amendment etc.) (EU Exit) Regulations 2019.

Part Code Table

Part Code	Description
555-269	Excel 12 Way Vertical PDU 12x C13 Socket Passive 10 A C20 Plug Switched