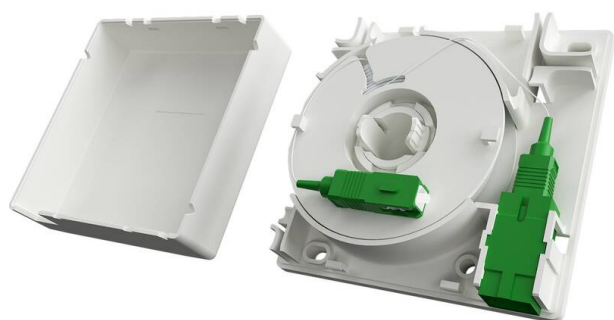


Excel Encasa Customer Access Point with 30 m of G.657.B3 Fibre SCA

Item Code: 900-099

excel
without compromise.

FTTx
solutions



✕ Suitable for internal use only

✕ 30 m of spooled fibre

✕ Pre-terminated SC/APC

✕ No splicing required

✕ Factory assembled

✕ G.657.B3 bend insensitive

Product Overview

The Excel Encasa discreet cabling solution has been designed for installation in any household or multi-dwelling application. The outlet's unique spooling mechanism houses 30 m of 900 μm G.657.B3 micro-fibre, which can be discreetly deployed around the property's interior and retracted to eliminate any slack fibre.

This Encasa customer access point comes pre-terminated with SCA connectivity. Enhanced flexibility is achieved through multiple cable exit points around the enclosure, enabling connected fibre to be routed from the top, bottom, and sides of the access point.

The anti-rotation mechanism enables the fibre to spool freely from its open position and securely locks in place upon completion of the installation to ensure stability.

The ability to remove the adapter from the base of the access point facilitates swift and effortless cleaning of all end faces, guaranteeing the highest quality installation.

Product Specifications

Feature	Values
Surface mounted	yes
Type of connector	SC/APC simplex
With couplers	yes
Suitable for number of couplers	1
Suitable for type of fibre	Single mode
Colour coding	yes
Width	85 mm

Excel Encasa Customer Access Point with 30 m of G.657.B3 Fibre SCA

Item Code: 900-099



Height	85 mm
Depth	26 mm

Additional specifications

Features	Values
Material	ABS
Material colour	RAL 9003
Flamability	UL 94 V-0
Fibers colour	White
Tight buffer material	LSZH
Cable diameter	900 µm
Bend insensitive	G.657.B3
Operating temperature	-25 to +70 °C

Included accessories

Accessories	Quantity
Screws and rawl plugs	1 set

Standards

Applicable standard	Detail
IEC 61754-1:2013	Fibre optic interconnecting devices and passive components - Fibre optic connector interfaces - Part 1: General and guidance
ISO/IEC 11801-1:2017	Information technology - Generic cabling for customer premises: Part 1 General Requirements
EN 50173-1:2018	Information technology - Generic cabling systems - General requirements
UL 94 V-0	Burning stops within 10 seconds after two applications of ten seconds each of a flame to a test bar. NO flaming drips are allowed.
RoHS-II/-III (2011/65/EU & 2015/863): 2023	Our products, demonstrate full adherence to the regulatory stipulations of the EU Directive 2011/65/EU (RoHS-II) and its corresponding delegated directive 2015/863 (RoHS-III).

Excel Encasa Customer Access Point with 30 m of G.657.B3 Fibre SCA

Item Code: 900-099



WFD: 2023

Compliant to Waste Framework Directive

SCIP: 2023

Compliant - Does Not Contain Substances of Concern In articles as such or in complex objects (Products)

POPs (EU) No 2019/1021

EU Regulation for the restriction of Persistent Organic Pollutants.

Part Number Table

Part Number	Description
900-099	Excel Encasa Customer Access Point with 30 m of G.657.B3 Fibre SCA

Excel is a world class premium performing end to end infrastructure solution designed, Manufactured, supported and delivered without compromise.

Contact us at sales@excel-networking.com



E&OE. Excel is a registered trade name of Mayflex Holdings Ltd.