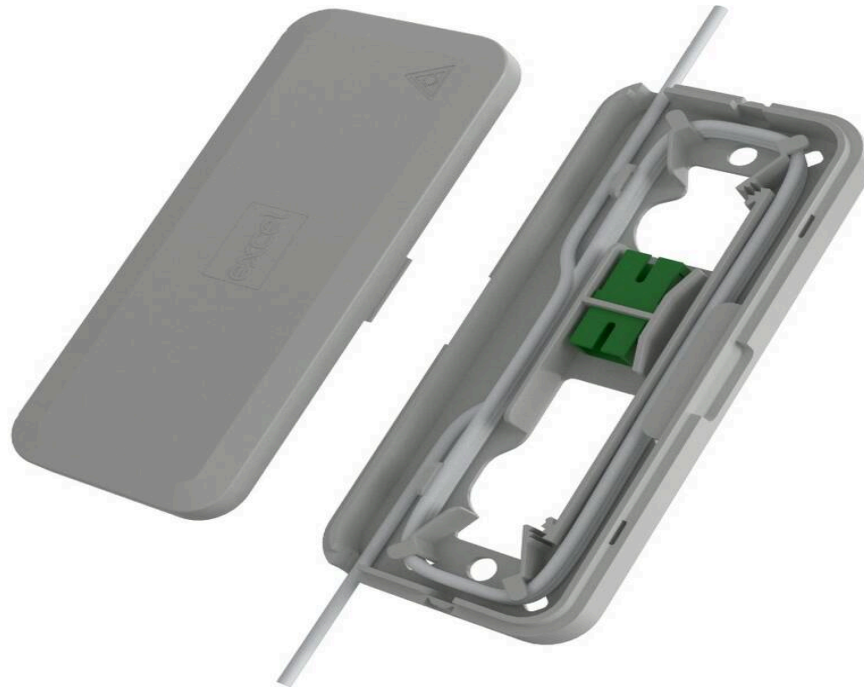


Excel Encasa Point of Entry Box Loaded with 1x LCA and 2x 1 Metre Pigtail

Part Code: 901-101

sales@excel-networking.com
excel-networking.com



FTTx
solutions



Main Features

- / Designated cable storage area
- / IP20 rated
- / Accepts LC duplex or SC simplex
- / Internal use only
- / UL94-V0
- / RoHS compliant

Product Overview

The Encasa compact point of entry box has been designed for the fibre to be passed through the enclosure allowing fibre to be distributed to apartments in multi dwellings applications. The enclosure has multiple cable entry points, a cable storage area, holds up to 2 splice protectors and has a single position to house either a SC simplex or LC duplex adaptor. Flexibility is increased as the enclosure has latch points on both sides of the lid to allow it to be opened from the top or bottom when installed at high or low levels. The cable storage area accommodates 2 mm to 3 mm cable with a maximum of 2 m 2 mm and 1 m 3 mm. Each enclosure comes pre-loaded with APC adaptors and 1 m G.657.A2 pigtails as standard, with an option to have adaptors only or longer pigtails installed if required. The compact design also...

Excel Encasa Point of Entry Box Loaded with 1x LCA and 2x 1 Metre Pigtail

Part Code: 901-101

sales@excel-networking.com
excel-networking.com

Product Specifications

Feature	Values
Surface mounted	yes
Type of connector	LCA/SCA
With couplers	yes
Suitable for type of fibre	Single mode
IP-rating	IP20
Ambient temperature	-40...60 °C
Width	148 mm
Height	60 mm
Depth	18 mm

Additional specifications

Features	Values
Maximum number of fibres	1 SC simplex or 1 LC duplex
Maximum number of splices	2
Adaptor type	SC simplex or LC duplex
Maximum number of adaptor positions	1
Maximum cable storage capacity	2 mm = 2 m/7 turns; 3 mm = 1 m/3 turns
IP rating	IP20 (suitable for internal installations only)
Material	ABS
UL94-V0	Yes
Colour	White (RAL 9003)

Excel Encasa Point of Entry Box Loaded with 1x LCA and 2x 1 Metre Pigtail

Part Code: 901-101

sales@excel-networking.com
excel-networking.com

Dimensions (mm)

60 mm H x 148 mm W x 18 mm D

Cable Entry Parameters

Features	Values
Number of cable entry points	4
Cable diameter	2 mm to 6 mm

LC and SC/APC Adaptor Specification

Features	Values
Insertion loss	< 0.2 dB
Durability (500 mating)	< 0.2 dB max increase
Operating temperature	-40°C to 80°C
Retention force	200 - 600 grams
Alignment sleeve material	Ceramic
Flammability rated	UL 94 V-0
Polish type	APC

Pigtail Specification

Features	Values
Construction	Easy-strip
Diameter	900 micrometre (µm)
Temperature range	-20°C to 70°C
Minimum bend radius	10x cable diameter
Connector ferrule SC type	2.5 mm zirconia ceramic
Connector ferrule LC type	1.25 mm zirconia ceramic
Connector insertion loss	Max. 0.3 dB
Ferrule end face (singlemode APC)	Max. -60 dB

Excel Encasa Point of Entry Box Loaded with 1x LCA and 2x 1 Metre Pigtail

Part Code: 901-101

sales@excel-networking.com
excel-networking.com

Standards

Applicable standard	Detail
Directive 2011/65/EU (RoHS II)	Restriction of the Use of Certain Hazardous Substances in Electrical and Electronic Equipment — compliant. Applies within EU member states).
Directive (EU) 2015/863 (RoHS III)	Amending Directive 2011/65/EU to add four phthalates (DEHP, BBP, DBP, DIBP) to Annex II — compliant.
Directive 2008/98/EC (WFD)	Waste Framework Directive — compliant. Implemented in the UK through the Waste (England and Wales) Regulations 2011 (SI 2011 No. 988).
ECHA SCIP Database	Compliant; product does not contain SVHCs (Substances of Very High Concern) as defined under REACH Article 33(1). Submission obligations met under EU REACH and UK REACH.
Regulation (EU) 2019/1021 (POPs)	EU Regulation on Persistent Organic Pollutants — compliant. For Great Britain, compliance is aligned with the Persistent Organic Pollutants (Amendment) (EU Exit) Regulations 2020 (SI 2020 No. 1355).
UK SI 2012 No. 3032	The Restriction of the Use of Certain Hazardous Substances in Electrical and Electronic Equipment Regulations 2012 (UK RoHS) — compliant for Great Britain. Retained EU law, as amended by the Product Safety and Metrology (Amendment etc.) (EU Exit) Regulations 2019.

Part Code Table

Part Code	Description
901-100	Excel Encasa Point of Entry Box Loaded with 1x SCA and 1x 1 Metre Pigtail
901-101	Excel Encasa Point of Entry Box Loaded with 1x LCA and 2x 1 Metre Pigtail