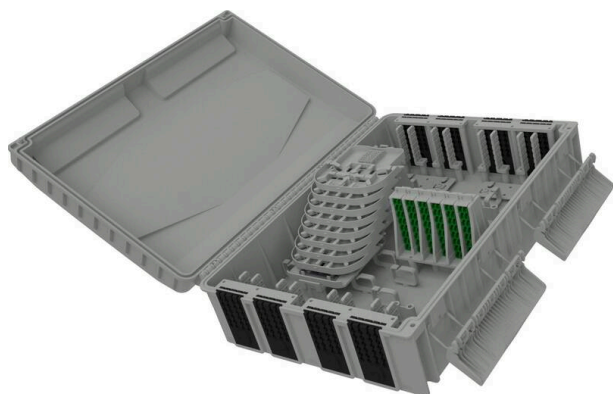


Excel Encasa 96 Fibre Distribution Point with 96 LCA Connections + 3x 1:32 Splitter Grey

Item Code: 996-007

excel
without compromise.

FTTx
solutions



✕ Designated splitter area

✕ IP56 rated

✕ Accepts LC duplex or SC simplex

✕ Internal/external

✕ UL94-V0

✕ RoHS compliant

Product Overview

The Encasa range of fibre distribution points have been designed to fit within the FTTx network. These enclosures can be aerial or wall mounted. Made from 100% virgin UL94-V0 rated material, UV stable and are IP56 rated, allowing them to be used in both internal and external applications. This Encasa fibre distribution point accommodates 96 fibres (using LC connections) or 48 fibres (using SC connections).

Flexibility is increased through the option to use the enclosure for traditional splicing of cables with a capacity of 192 fibres and the installation of pre-terminated cables via the 192 split gland cable exit points 96 on the top and bottom of the enclosure that accept both flat and round cable. The use of splitters is also possible with mounting positions for up to 24 units found under the splice trays. Each enclosure comes pre-loaded with APC adaptors and splitters.

The splitters are terminated with APC connections on the outgoing end and unterminated on the incoming end as standard. Options are available to have adaptors and standard pigtailed or loaded with adaptors only. The adaptor field has been designed so each stack of adaptors can be pulled up to allow better access to plug and unplug connections.

The cable entry points allow for midspan cable installation and for cable to be passed through to feed further enclosures in the network. Integrated fibre management allows 250 µm and 900 µm fibre to be installed, keeping the fibres safe and always maintaining the required bend radius.

Product Specifications

Feature	Values
Surface mounted	yes
Type of connector	LCA/SCA
With couplers	yes
Suitable for type of fibre	Single mode

Excel Encasa 96 Fibre Distribution Point with 96 LCA Connections + 3x 1:32 Splitter Grey

Item Code: 996-007



IP-rating	IP56
Ambient temperature	-40...60 °C
Width	340 mm
Height	450 mm
Depth	152 mm

Additional specifications

Features	Values
Maximum number of fibres	48 SC or 96 LC
Maximum number of splices trays	8
Maximum number of fibres per tray	24
Maximum number of splices	192
Adaptor type	SC simplex or LC duplex
Maximum number of adaptor positions	48
IP rating	IP56 (suitable for internal and external installations)
UV stable	Yes
Material	ABS + PC
UL94-V0	Yes
Colour (Other colours available subject to MOQ)	Light grey (RAL 7035) or black (RAL 9005)
Dimensions (mm)	450 mm H x 340 mm W x 152 mm D

Splicer Options

Features	Values
1:4 plc splitter	Max. 24
1:8 plc splitter	Max. 12
1:16 plc splitter	Max. 6
1:32 plc splitter	Max. 3

Cable Entry and Exit Parameters

Features	Values
Number of feeder cable entry points	4 top and 4 bottom
Midspan capability	Yes
Cable diameter using compression gland	5 mm to 13.5 mm

Excel Encasa 96 Fibre Distribution Point with 96 LCA Connections + 3x 1:32 Splitter Grey

Item Code: 996-007



Cable diameter using rubber grommet	5 mm to 20 mm
Number of cables exit points	96 top and 96 bottom
Cable diameter	3 mm - 6 mm

LC and SC/APC Adaptor Specification

Features	Values
Insertion loss	< 0.2 dB
Durability (500 mating)	< 0.2 dB max increase
Operating temperature	-40°C to 80°C
Retention force	200 - 600 grams
Alignment sleeve material	Ceramic
Flammability rated	UL 94 V-0
Polish type	APC

Splitter Specification

Features	Values
1x4 1x8 1x16 1x32	
Operating wavelength	1260 to 1650
Fibre type	G.657.A2
Temperature stability (dB) at -40°C to 85°C	$\leq 0.4 \leq 0.4 \leq 0.5 \leq 0.5$
Storage temperature	-40°C to 85°C
Return loss	≥ 55 dB

Standards

Applicable standard	Detail
RoHS-II/-III (2011/65/EU & 2015/863): 2023	Our products, demonstrate full adherence to the regulatory stipulations of the EU Directive 2011/65/EU (RoHS-II) and its corresponding delegated directive 2015/863 (RoHS-III).
WFD: 2023	Compliant to Waste Framework Directive
SCIP: 2023	Compliant - Does Not Contain Substances of Concern In articles as such or in complex objects (Products)
POPs (EU) No 2019/1021	EU Regulation for the restriction of Persistent Organic Pollutants.

Excel Encasa 96 Fibre Distribution Point with 96 LCA Connections + 3x 1:32 Splitter Grey

Item Code: 996-007



Part Number Table

Part Number	Description
996-000	Excel Encasa 96 Fibre Distribution Point with 64 LCA Connections + 16x 1:4 Splitter Grey
996-001	Excel Encasa 96 Fibre Distribution Point with 96 LCA Connections + 24x 1:4 Splitter Grey
996-002	Excel Encasa 96 Fibre Distribution Point with 64 LCA Connections + 8x 1:8 Splitter Grey
996-003	Excel Encasa 96 Fibre Distribution Point with 96 LCA Connections + 12x 1:8 Splitter Grey
996-004	Excel Encasa 96 Fibre Distribution Point with 64 LCA Connections + 4x 1:16 Splitter Grey
996-005	Excel Encasa 96 Fibre Distribution Point with 96 LCA Connections + 6x 1:16 Splitter Grey
996-006	Excel Encasa 96 Fibre Distribution Point with 64 LCA Connections + 2x 1:32 Splitter Grey
996-007	Excel Encasa 96 Fibre Distribution Point with 96 LCA Connections + 3x 1:32 Splitter Grey
996-008	Excel Encasa 96 Fibre Distribution Point with 48 SCA Connections + 3x 1:16 Splitter Grey

Excel is a world class premium performing end to end infrastructure solution designed, Manufactured, supported and delivered without compromise.

Contact us at sales@excel-networking.com



E&OE. Excel is a registered trade name of Mayflex Holdings Ltd.