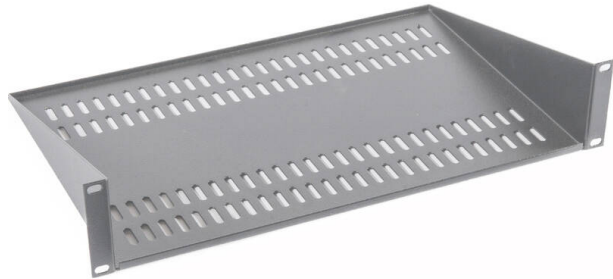


Excel Modem/Cantilever Vented Shelf 2U 400mm Grey

Item Code: MS40



Choice of depths

Choice of colours

Perforated design

Product Overview

Cantilever Shelves can be used to support both active and non-active data equipment within the rack that is none 19" rack mountable, these shelves are fitted to the front 19" profiles using M6 hardware and are vented which allows for air circulation around the equipment. This shelf is commonly deployed in wall racks but can also be used in floor standing racks, universal fitting allows them to be used in a wide range of racks. The shelf allows for fitting of equipment in situations where one set of profiles have already been used for existing equipment.

Product Specifications

Feature	Values
Model	Cantilever shelf
Width	19"
Height	2u
Depth	400 mm
Max. load capacity	10 kg
Material	Metal
Colour	Grey

Excel Modem/Cantilever Vented Shelf 2U 400mm Grey

Item Code: MS40



Standards

Applicable standard	Detail
Directive 2011/65/EU (RoHS II)	Restriction of the Use of Certain Hazardous Substances in Electrical and Electronic Equipment — compliant. Applies within EU member states).
Directive (EU) 2015/863 (RoHS III)	Amending Directive 2011/65/EU to add four phthalates (DEHP, BBP, DBP, DIBP) to Annex II — compliant.
Directive 2008/98/EC (WFD)	Waste Framework Directive — compliant. Implemented in the UK through the Waste (England and Wales) Regulations 2011 (SI 2011 No. 988).
ECHA SCIP Database	Compliant; product does not contain SVHCs (Substances of Very High Concern) as defined under REACH Article 33(1). Submission obligations met under EU REACH and UK REACH.
Regulation (EU) 2019/1021 (POPs)	EU Regulation on Persistent Organic Pollutants — compliant. For Great Britain, compliance is aligned with the Persistent Organic Pollutants (Amendment) (EU Exit) Regulations 2020 (SI 2020 No. 1355).
UK SI 2012 No. 3032	The Restriction of the Use of Certain Hazardous Substances in Electrical and Electronic Equipment Regulations 2012 (UK RoHS) — compliant for Great Britain. Retained EU law, as amended by the Product Safety and Metrology (Amendment etc.) (EU Exit) Regulations 2019.

Part Number Table

Part Number	Description
MS19	Excel Modem/Cantilever Vented Shelf 1U 190mm Grey
MS19B	Excel Modem/Cantilever Vented Shelf 1U 190mm Black
MS40	Excel Modem/Cantilever Vented Shelf 2U 400mm Grey
MS40B	Excel Modem/Cantilever Vented Shelf 2U 400mm Black

Excel is a world class premium performing end to end infrastructure solution designed, Manufactured, supported and delivered without compromise.

Contact us at sales@excel-networking.com



E&OE. Excel is a registered trade name of Mayflex Holdings Ltd.