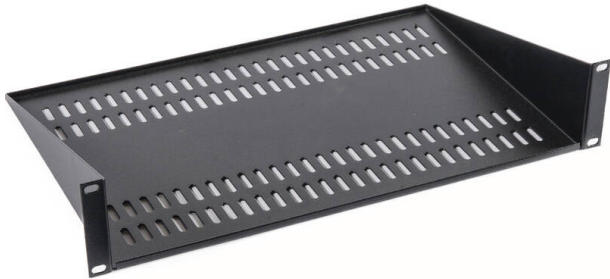


# Excel Modem/Cantilever Vented Shelf 2U 400mm Black

Item Code: MS40B



✕ Choice of depths

✕ Choice of colours

✕ Perforated design

## Product Overview

Cantilever Shelves can be used to support both active and non-active data equipment within the rack that is none 19" rack mountable, these shelves are fitted to the front 19" profiles using M6 hardware and are vented which allows for air circulation around the equipment. This shelf is commonly deployed in wall racks but can also be used in floor standing racks, universal fitting allows them to be used in a wide range of racks. The shelf allows for fitting of equipment in situations where one set of profiles have already been used for existing equipment.

## Product Specifications

| Feature            | Values           |
|--------------------|------------------|
| Model              | Cantilever shelf |
| Width              | 19"              |
| Height             | 2u               |
| Depth              | 400 mm           |
| Max. load capacity | 10 kg            |
| Material           | Metal            |
| Colour             | Black            |

# Excel Modem/Cantilever Vented Shelf 2U 400mm Black

Item Code: MS40B



## Standards

| Applicable standard                        | Detail  |
|--|---|
| RoHS-II/-III (2011/65/EU & 2015/863): 2023 | Our products, demonstrate full adherence to the regulatory stipulations of the EU Directive 2011/65/EU (RoHS-II) and its corresponding delegated directive 2015/863 (RoHS-III). |
| WFD: 2023                                  | Compliant to Waste Framework Directive  |
| SCIP: 2023                                 | Compliant - Does Not Contain Substances of Concern In articles as such or in complex objects (Products)   |
| POPs (EU) No 2019/1021                     | EU Regulation for the restriction of Persistent Organic Pollutants.   |

## Part Number Table

| Part Number | Description  |
|-------------|--|
| MS19        | Excel Modem/Cantilever Vented Shelf 1U 190mm Grey  |
| MS19B       | Excel Modem/Cantilever Vented Shelf 1U 190mm Black |
| MS40        | Excel Modem/Cantilever Vented Shelf 2U 400mm Grey  |
| MS40B       | Excel Modem/Cantilever Vented Shelf 2U 400mm Black |

Excel is a world class premium performing end to end infrastructure solution designed, Manufactured, supported and delivered without compromise.

Contact us at [sales@excel-networking.com](mailto:sales@excel-networking.com)



E&OE. Excel is a registered trade name of Mayflex Holdings Ltd.